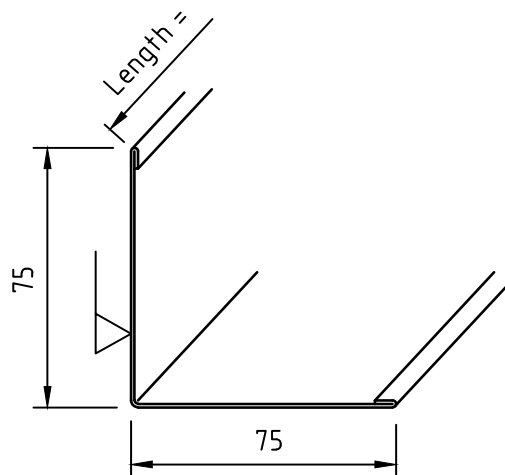
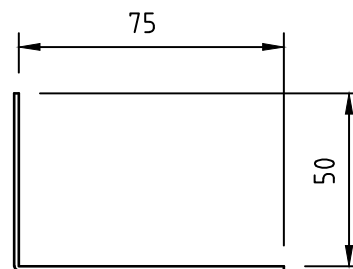
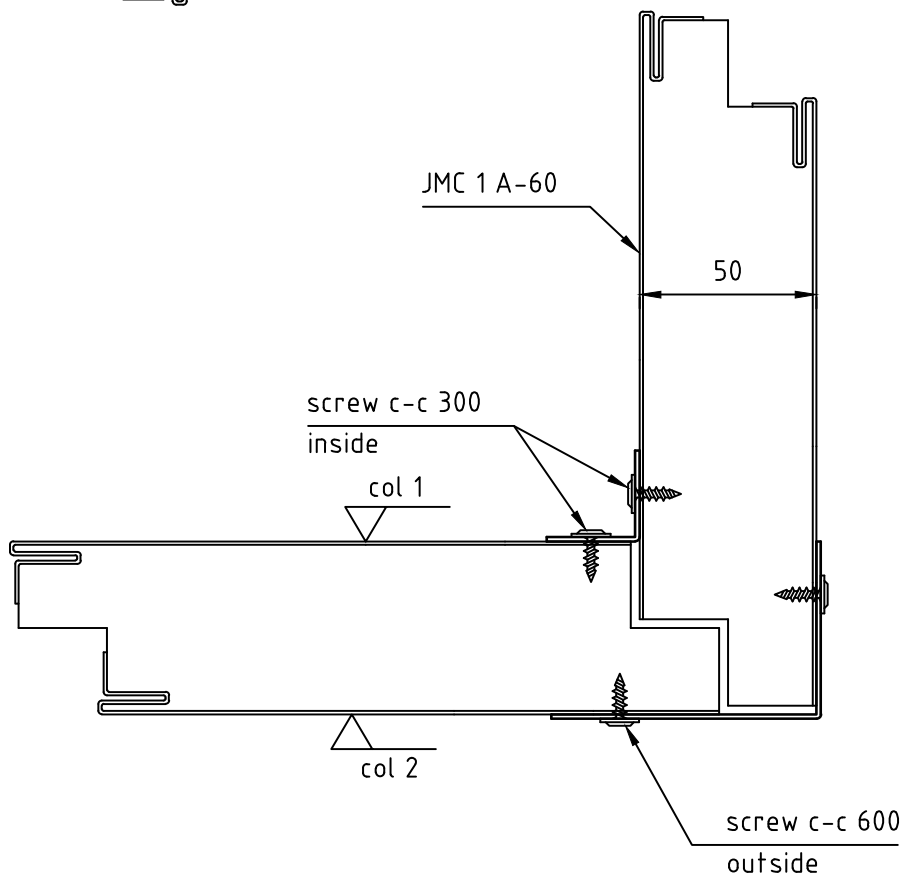


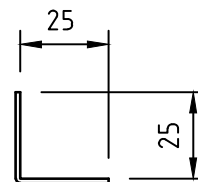
Corner profile in type 305



Corner profile out type 304

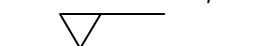


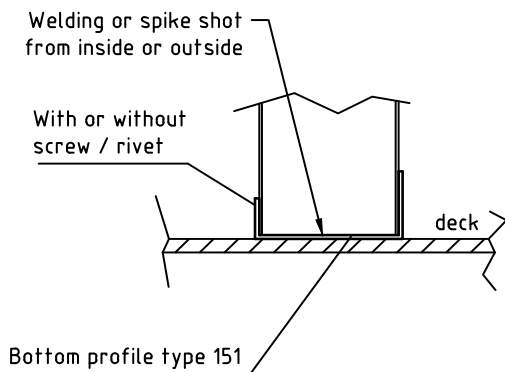
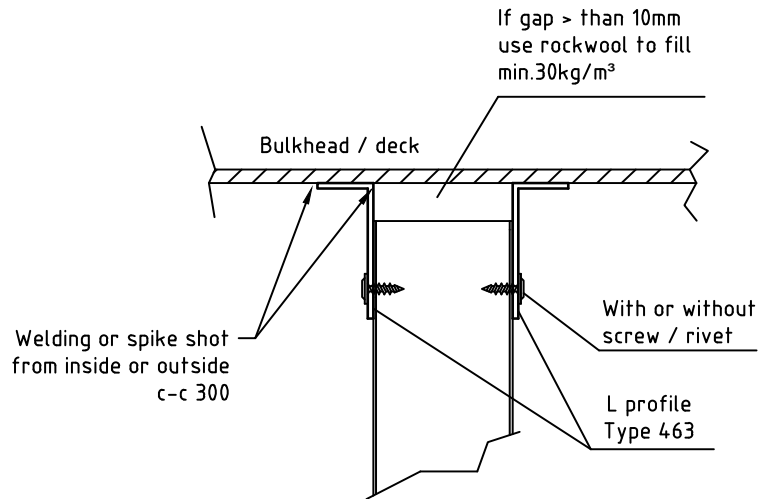
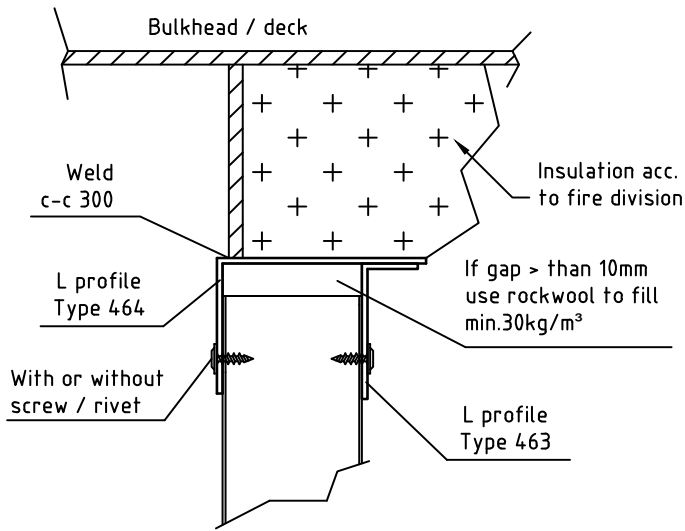
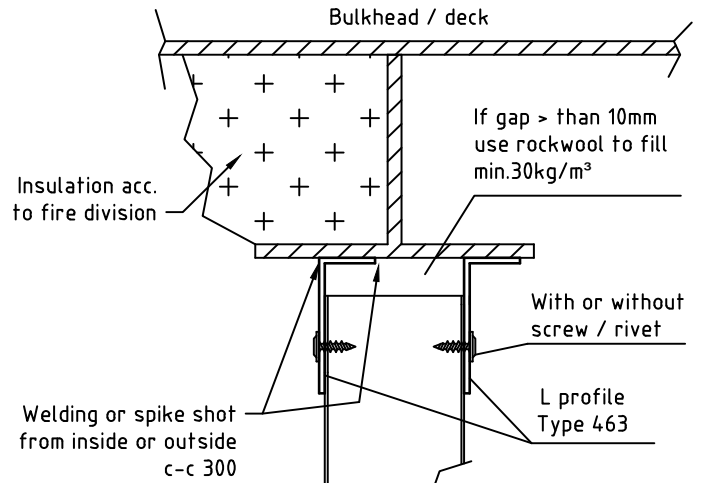
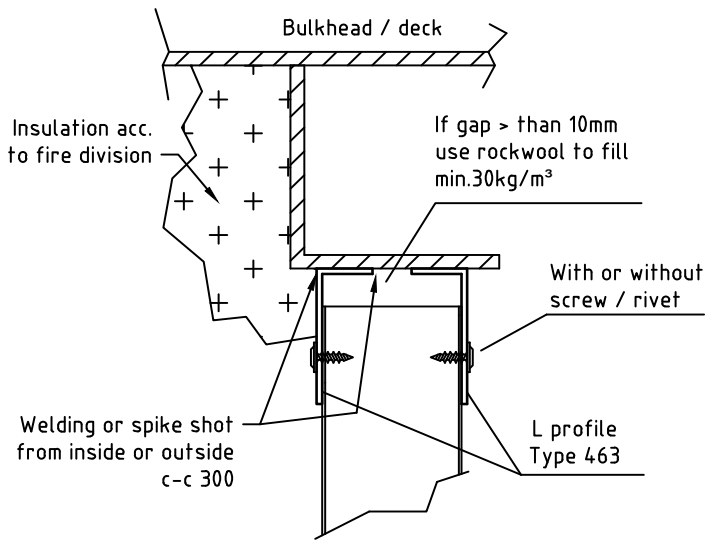
L profile type 464 Galv 1,25 mm



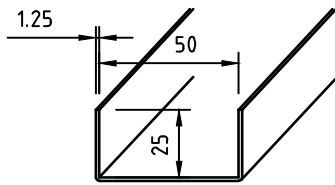
L profile type 462 Galv 1,25 mm

PVC or painted thickness 0,6 mm

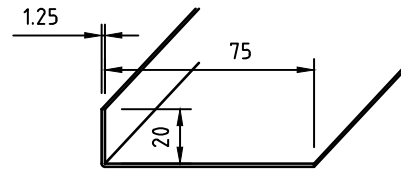




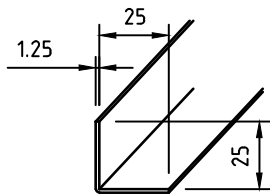
PVC or painted thickness 0,6 mm



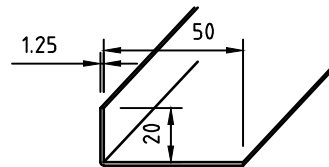
Connection profile
type 461
Galv 1,25 mm



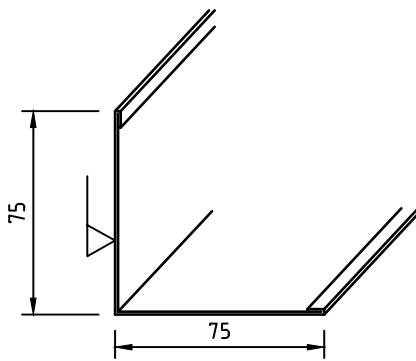
Connection profile
type 466
Galv 1,25 mm



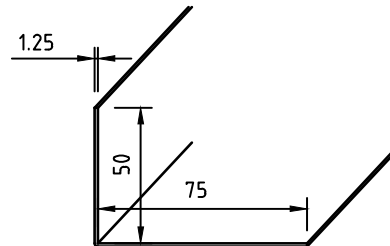
Connection profile
type 462
Galv 1,25 mm



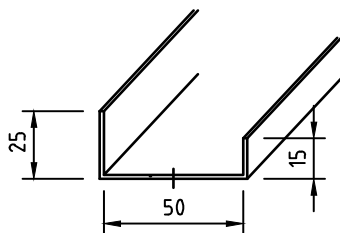
Connection profile
type 463
Galv 1,25 mm



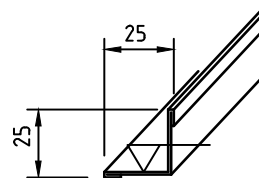
Corner profile
type 304
PVC / painted 0,6 mm



Connection profile
type 464
Galv 1,25 mm

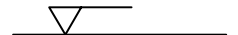


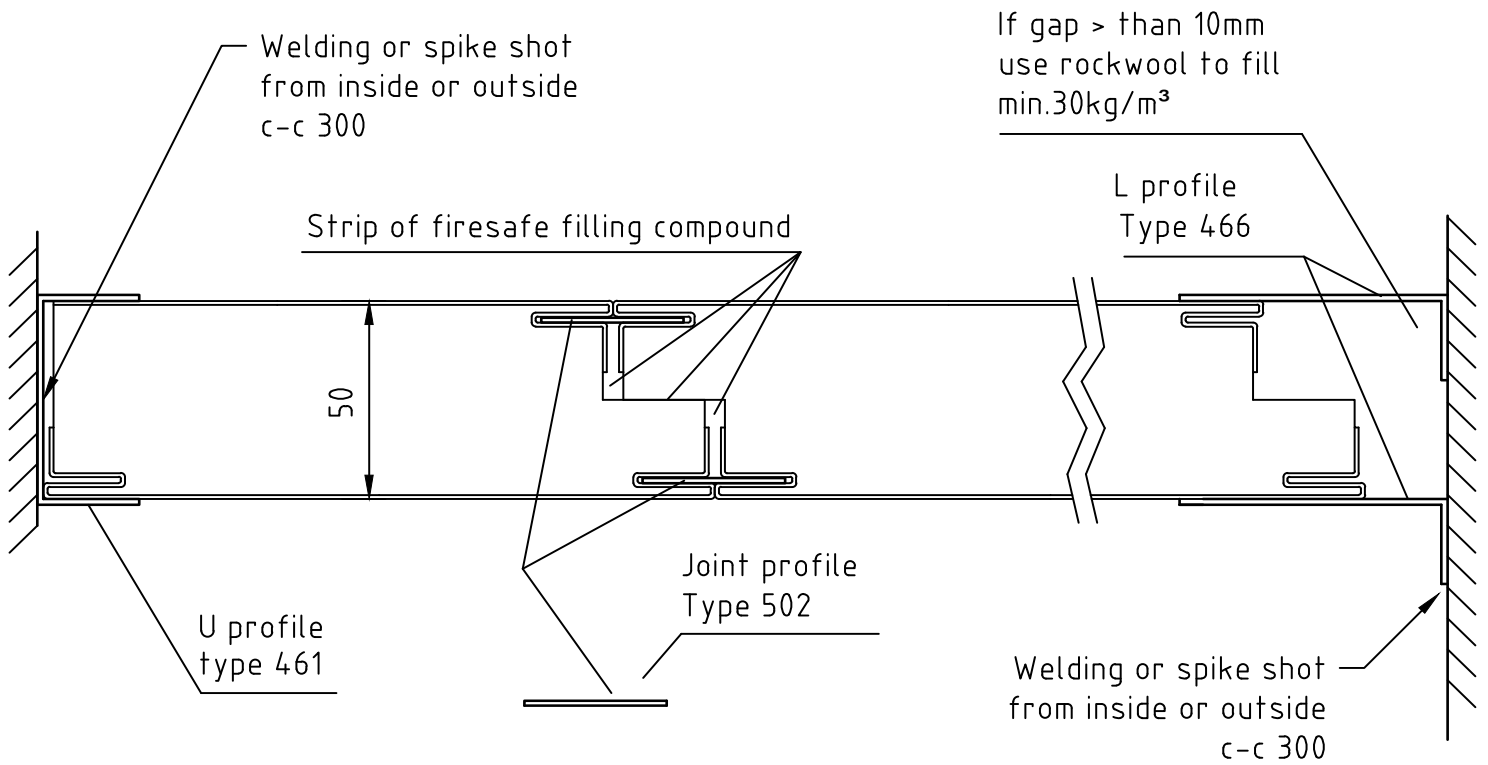
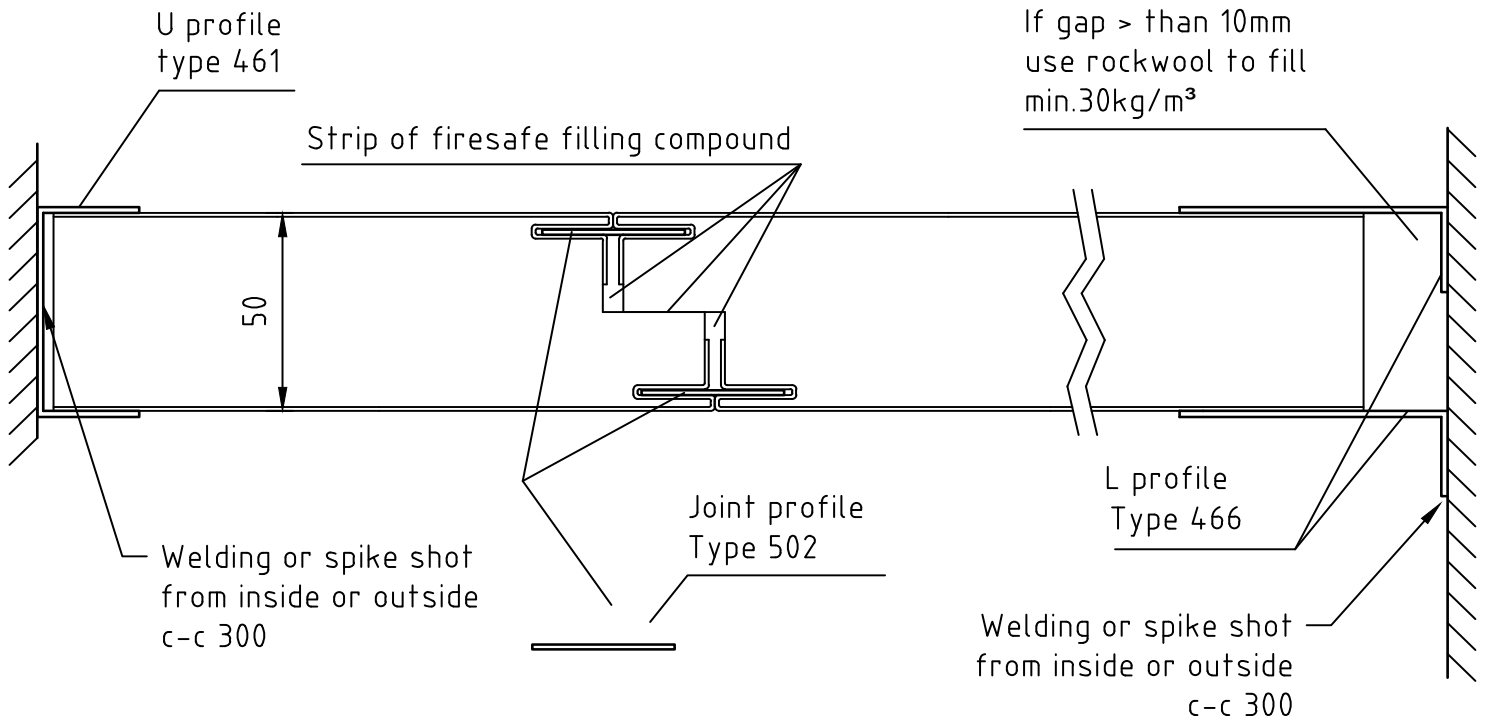
Bottom profile
type 151
Galv 1,25 mm

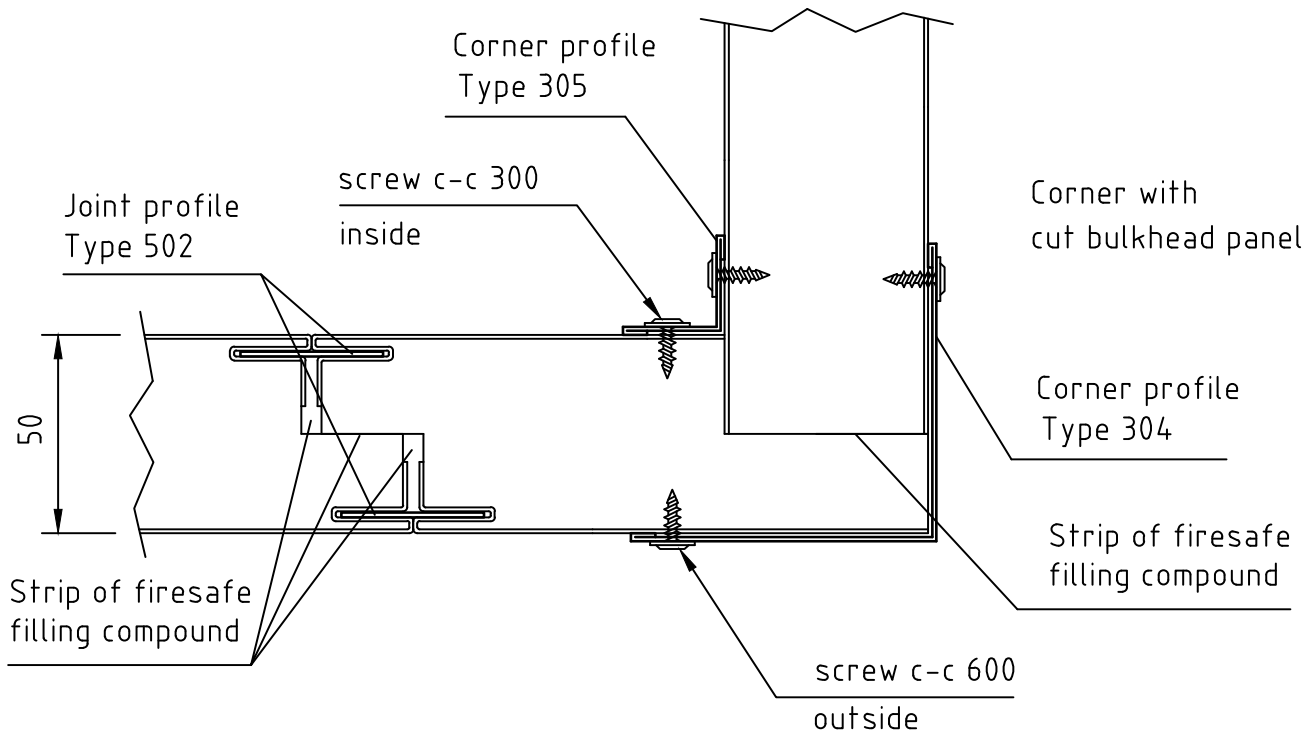
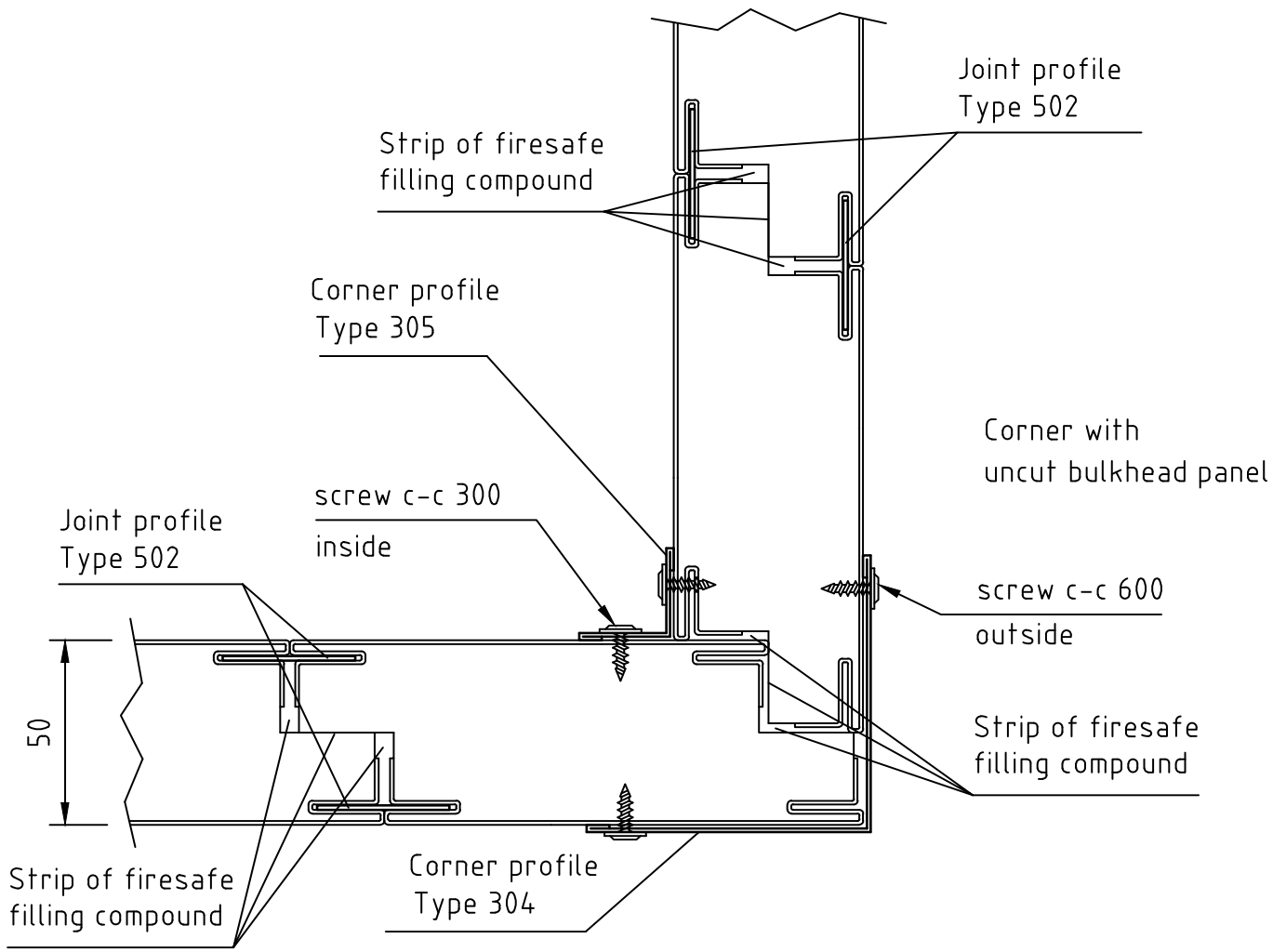


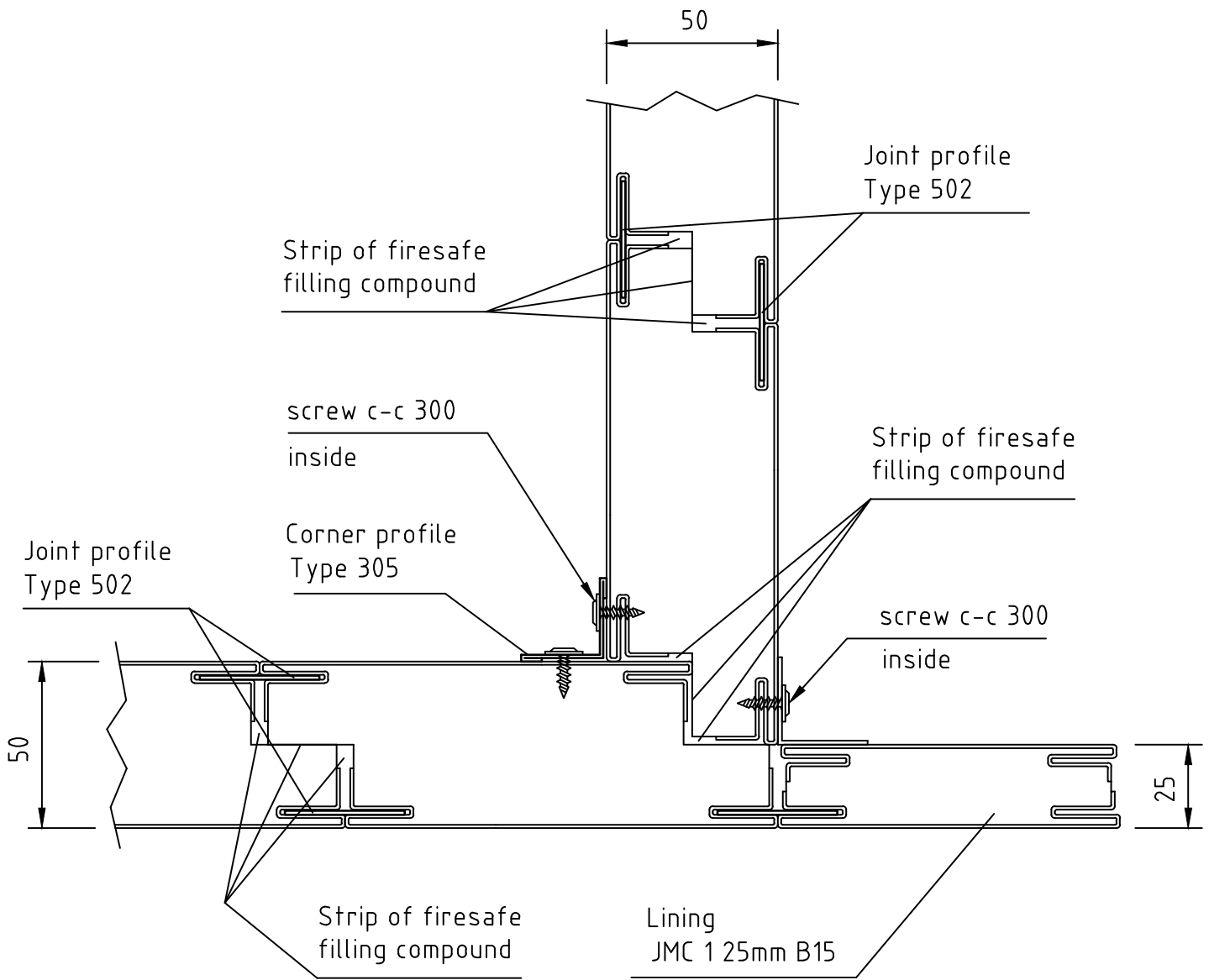
Corner profile
type 305
PVC / painted 0,6 mm

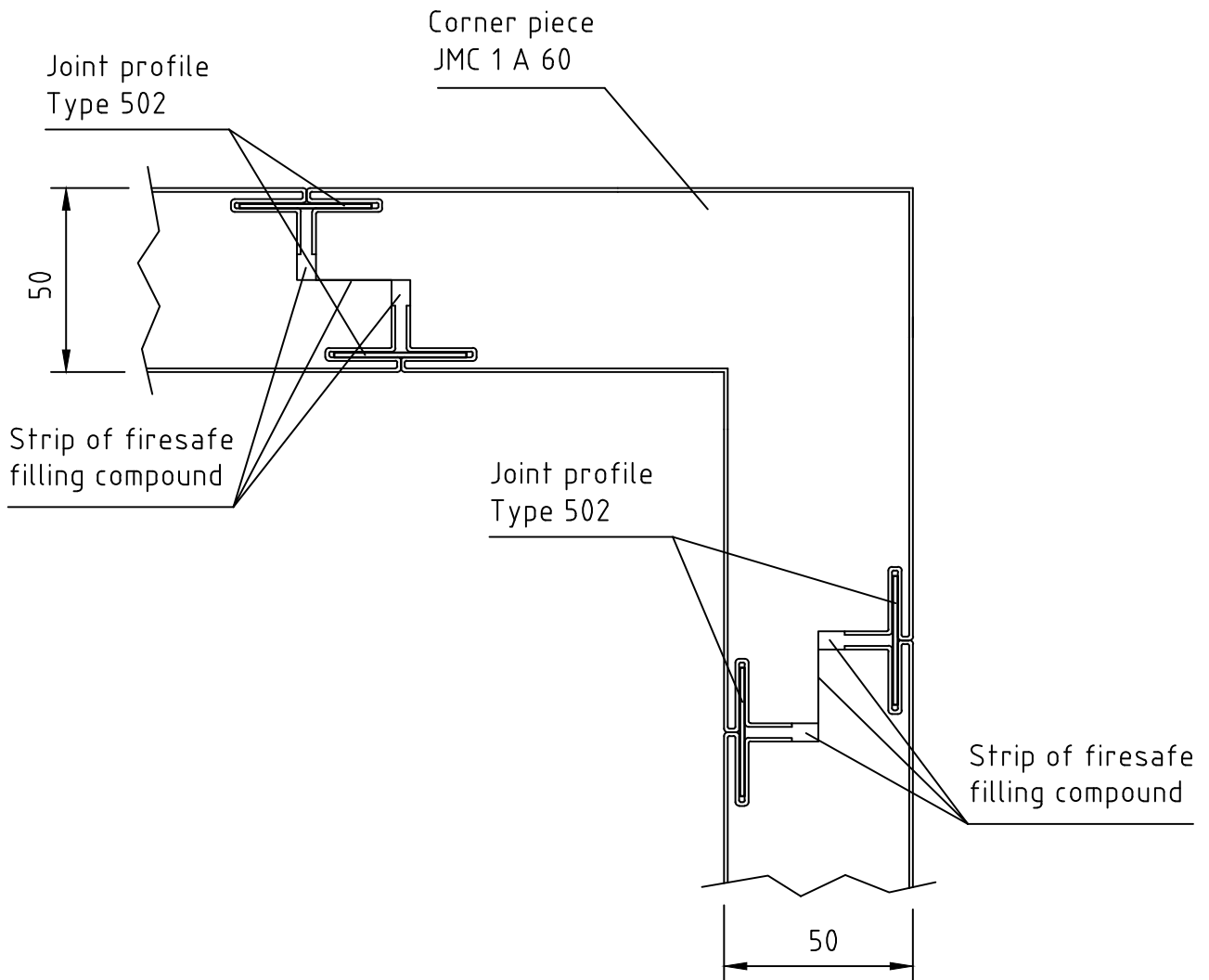
PVC or painted
thickness 0,6 mm

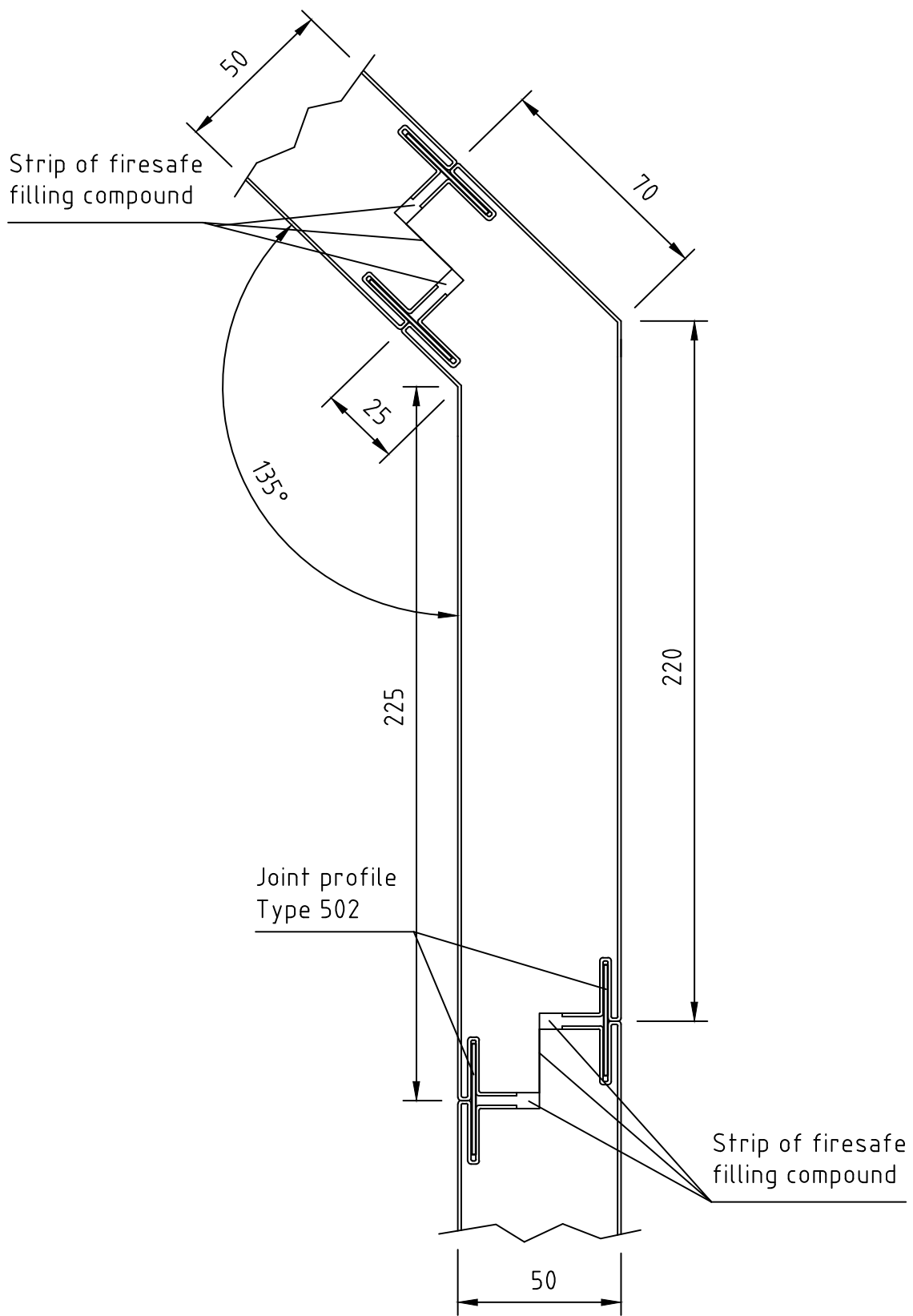


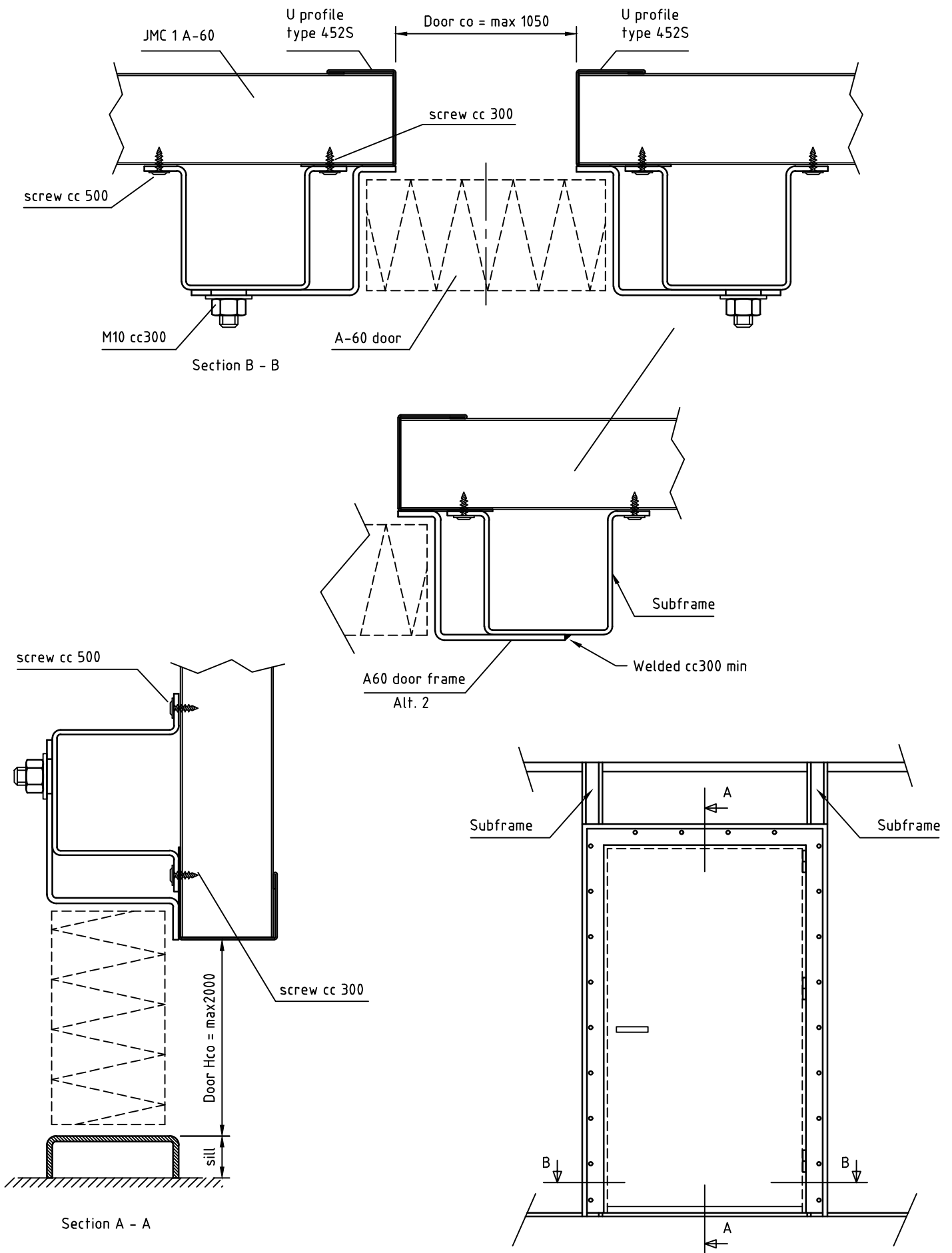


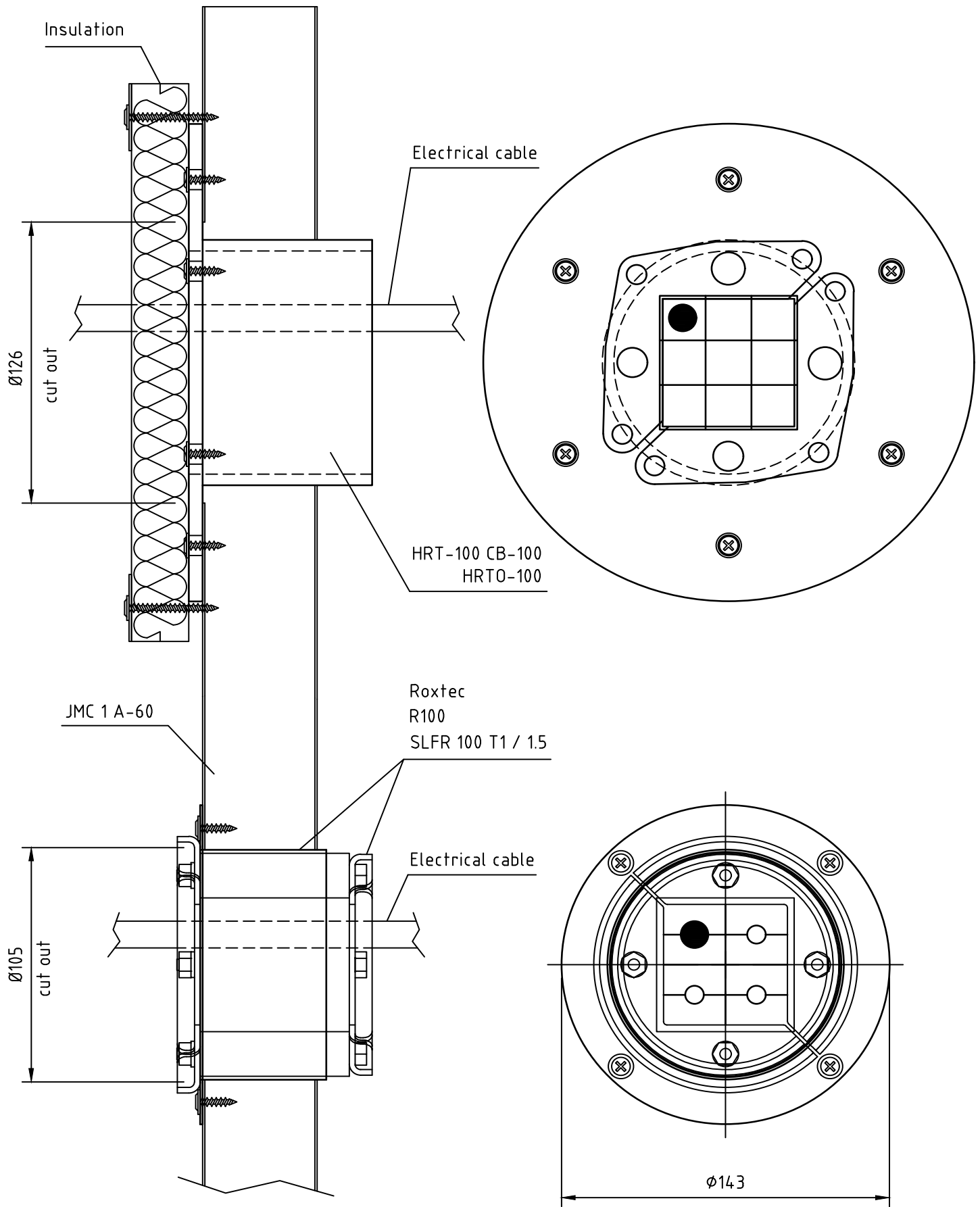


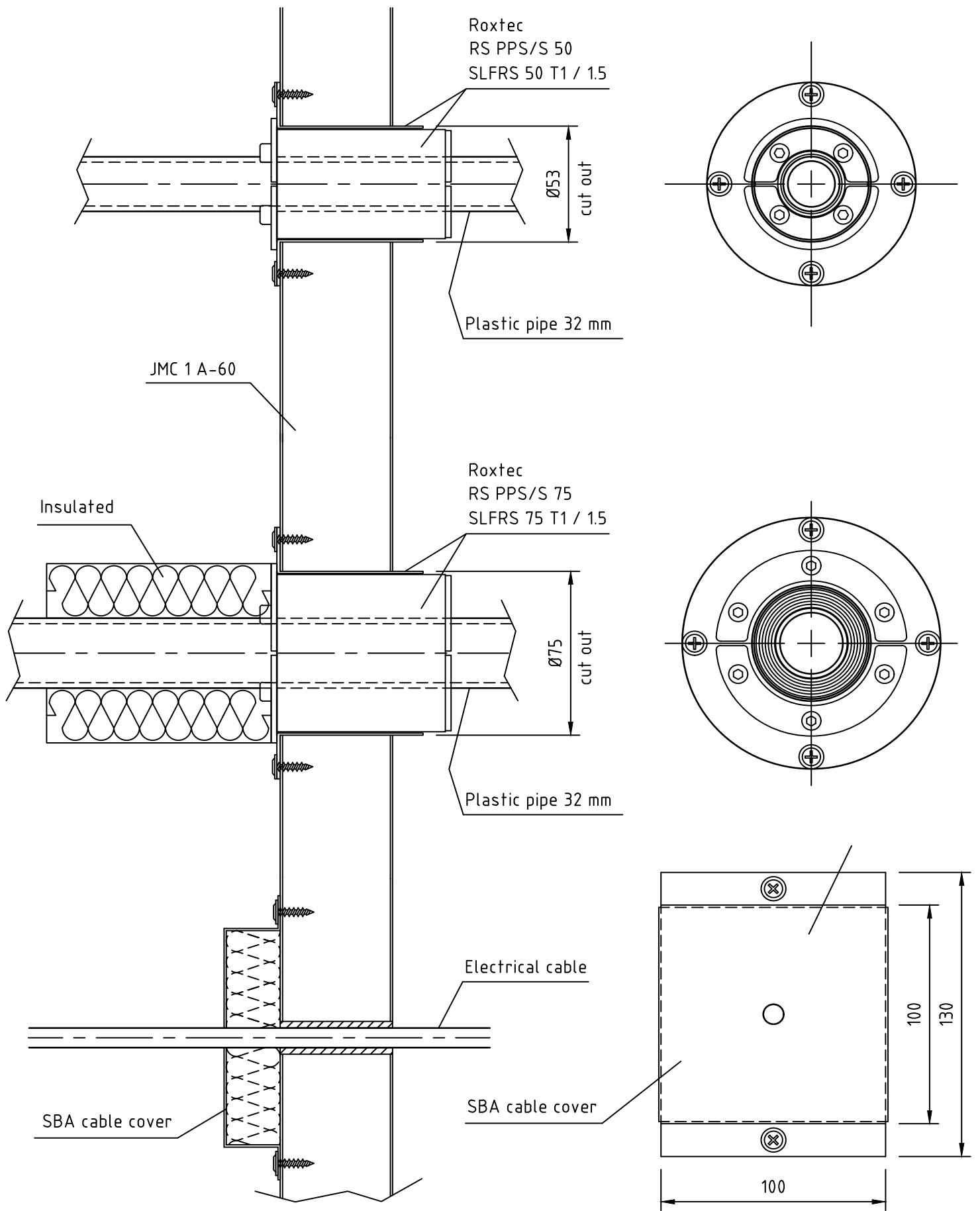


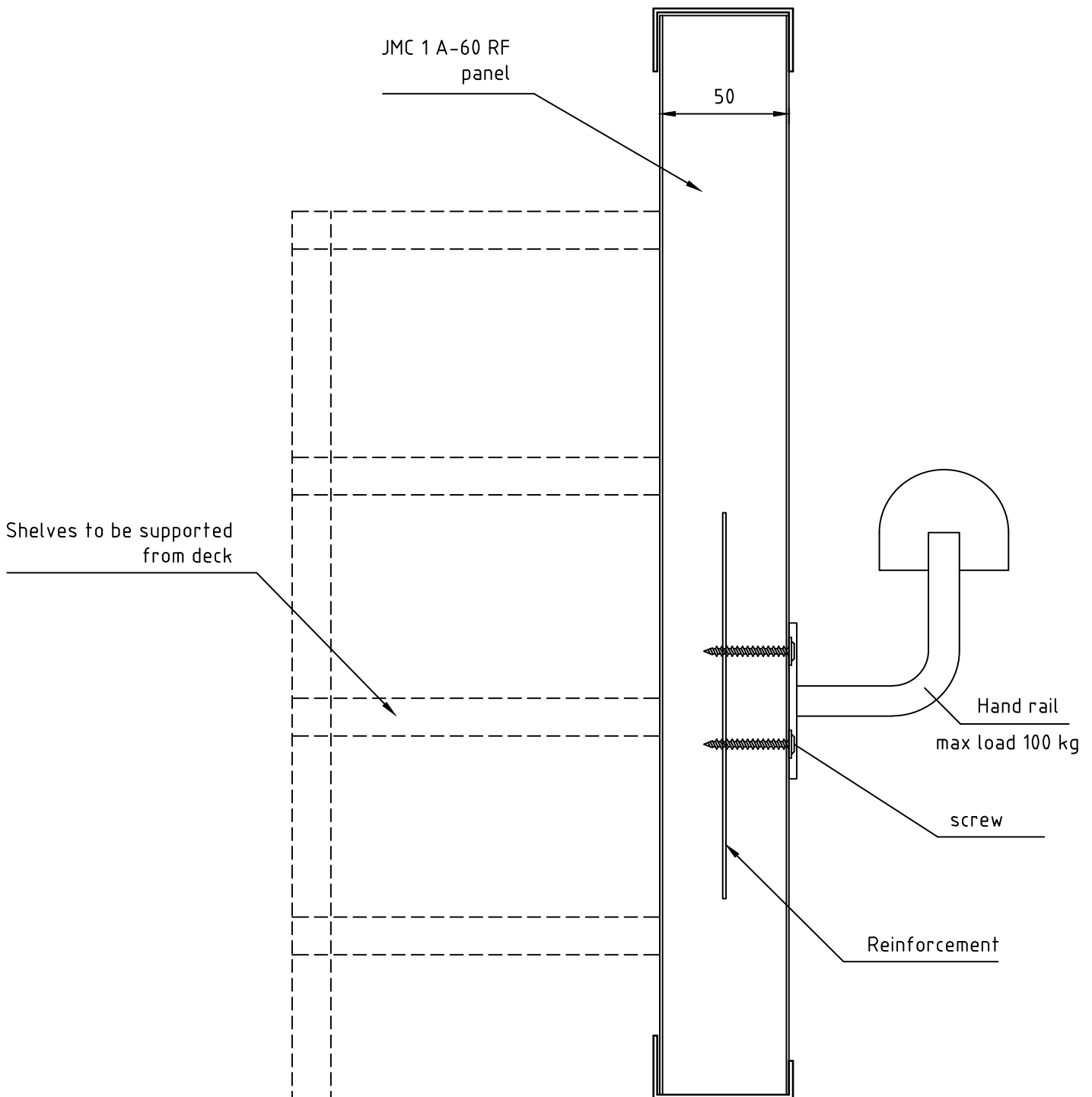








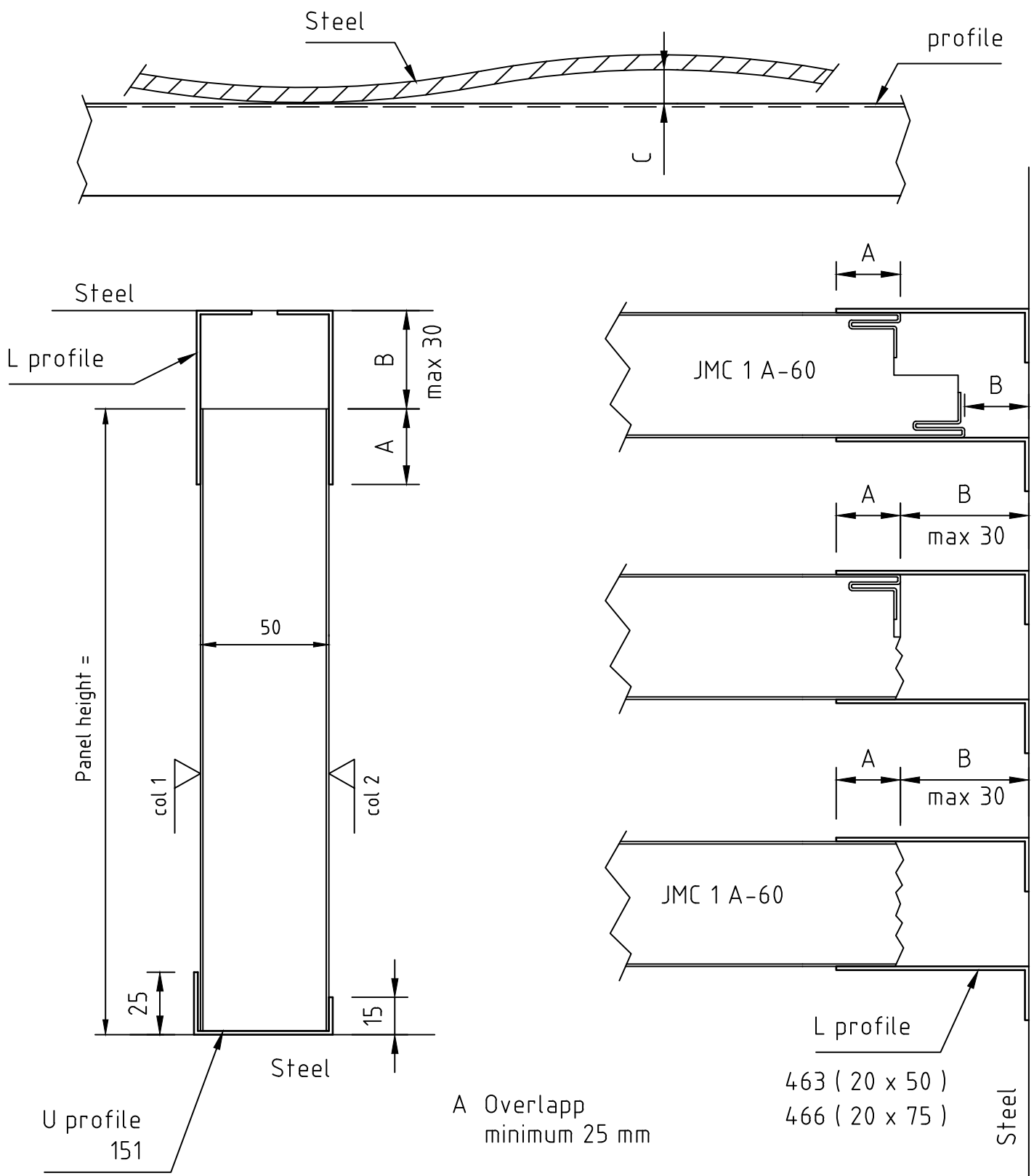




Regulations II-2/3.3.1 and 3.3.2

Application of “light-weight constructions”

“Light-weight constructions” (honeycomb type, etc.) of steel or equivalent material may be used as non load-bearing internal “A” class divisions in accommodation and service spaces, provided they have successfully passed the relevant standard fire test according to resolution A.754(18)*. These “light-weight constructions” should not be used as an integral part of main fire zone bulkheads and stairway enclosures on passenger ships.



A Overlapp
minimum 25 mm

B Gap to be insulated with rockwool
of minimum density 30kg/m³
if B > 10 mm

C Profiles to be welded to follow steel.
Small gaps to be filled with fire seal,
if needed before painting