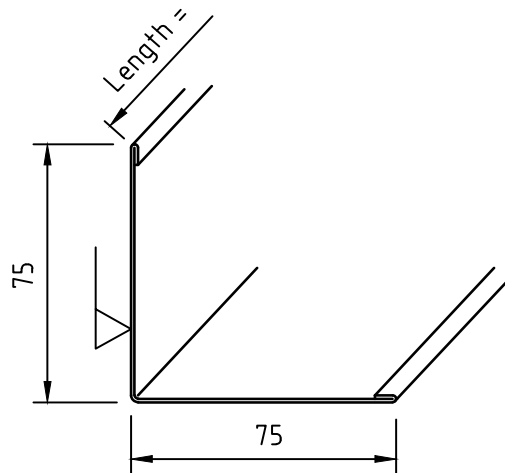
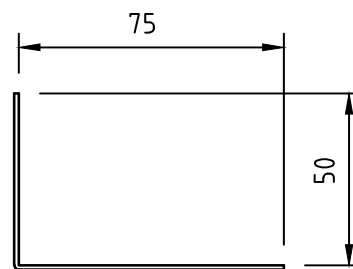
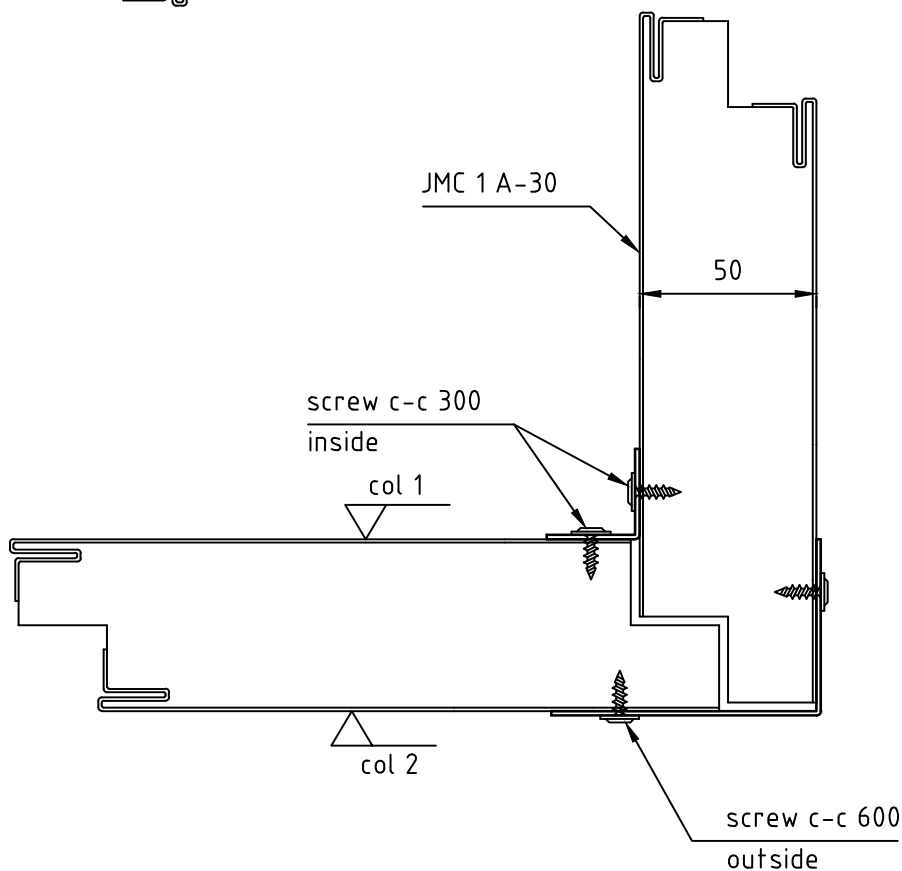


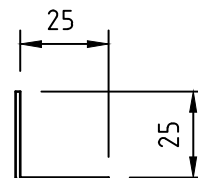
Corner profile in  
type 305



Corner profile out  
type 304

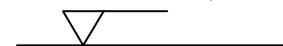


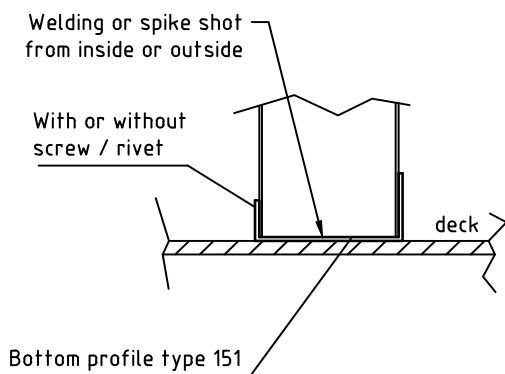
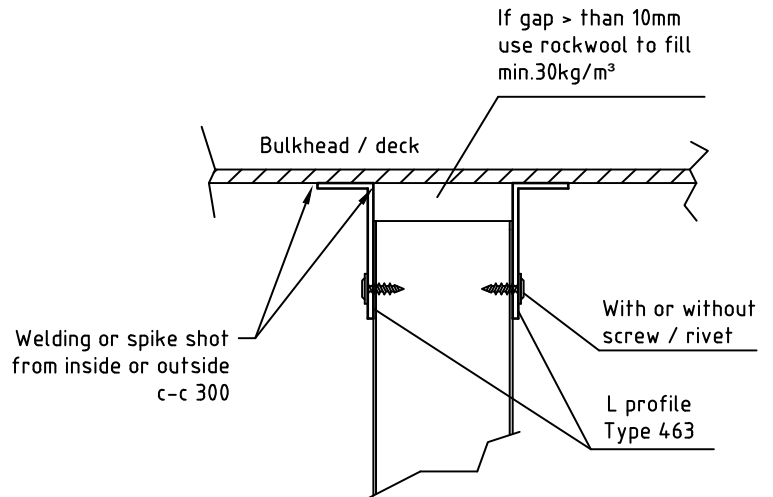
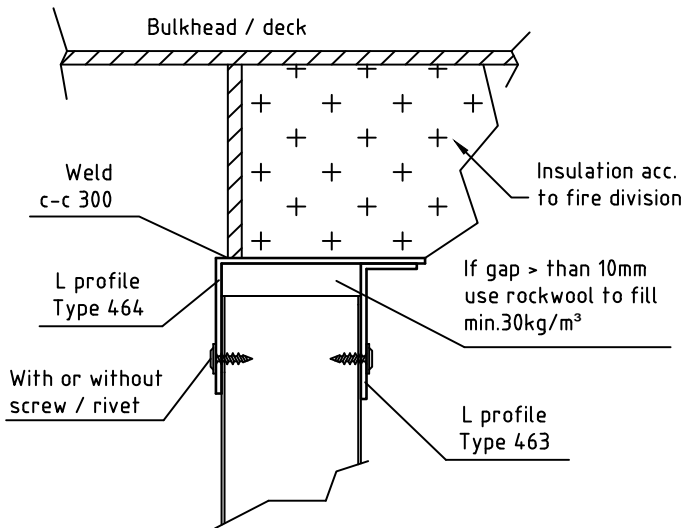
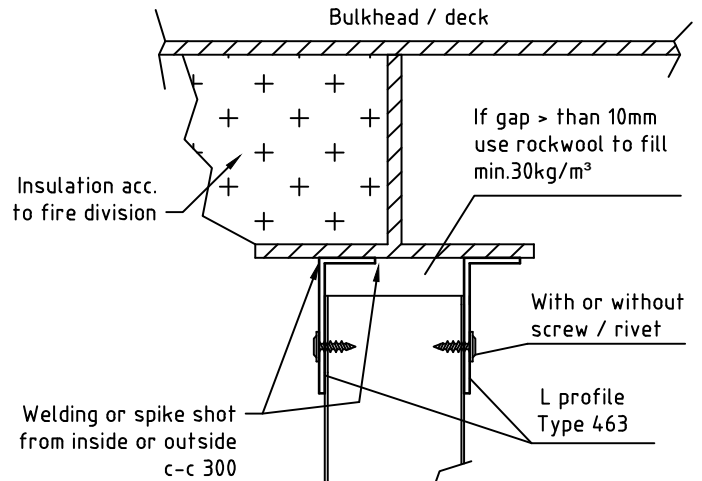
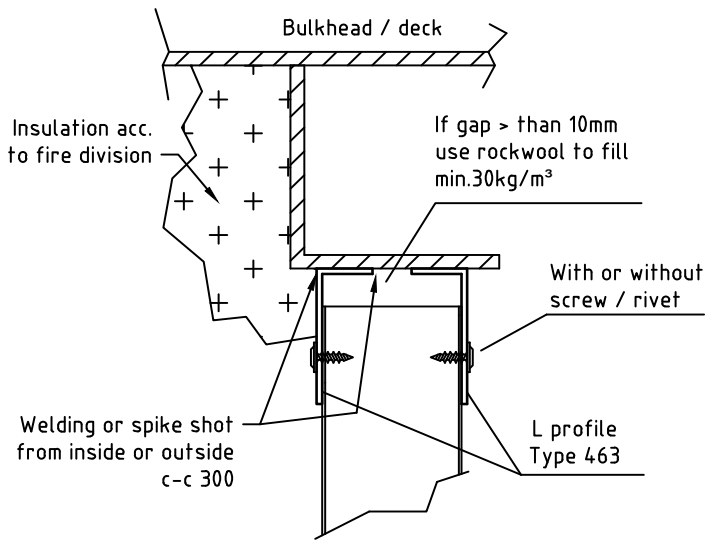
L profile  
type 464  
Galv 1,25 mm



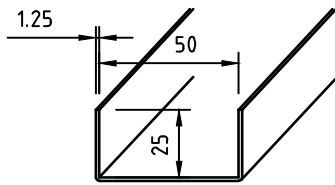
L profile  
type 462  
Galv 1,25 mm

PVC or painted  
thickness 0,6 mm

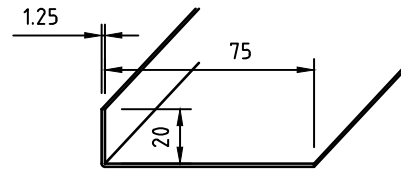




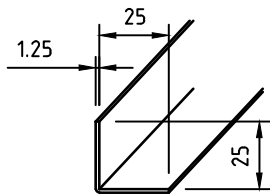
PVC or painted thickness 0,6 mm



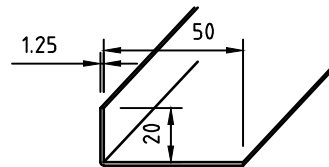
Connection profile  
type 461  
Galv 1,25 mm



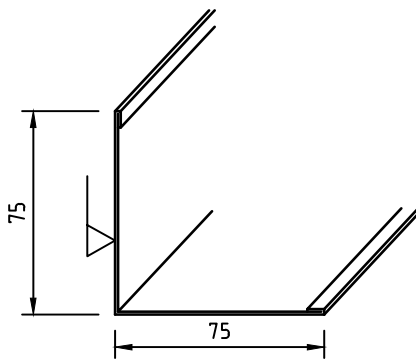
Connection profile  
type 466  
Galv 1,25 mm



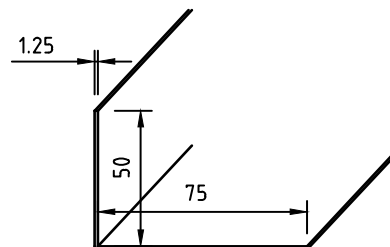
Connection profile  
type 462  
Galv 1,25 mm



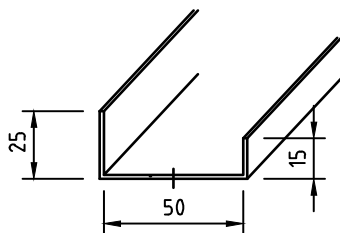
Connection profile  
type 463  
Galv 1,25 mm



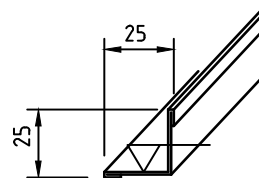
Corner profile  
type 304  
PVC / painted 0,6 mm



Connection profile  
type 464  
Galv 1,25 mm

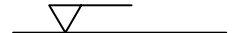


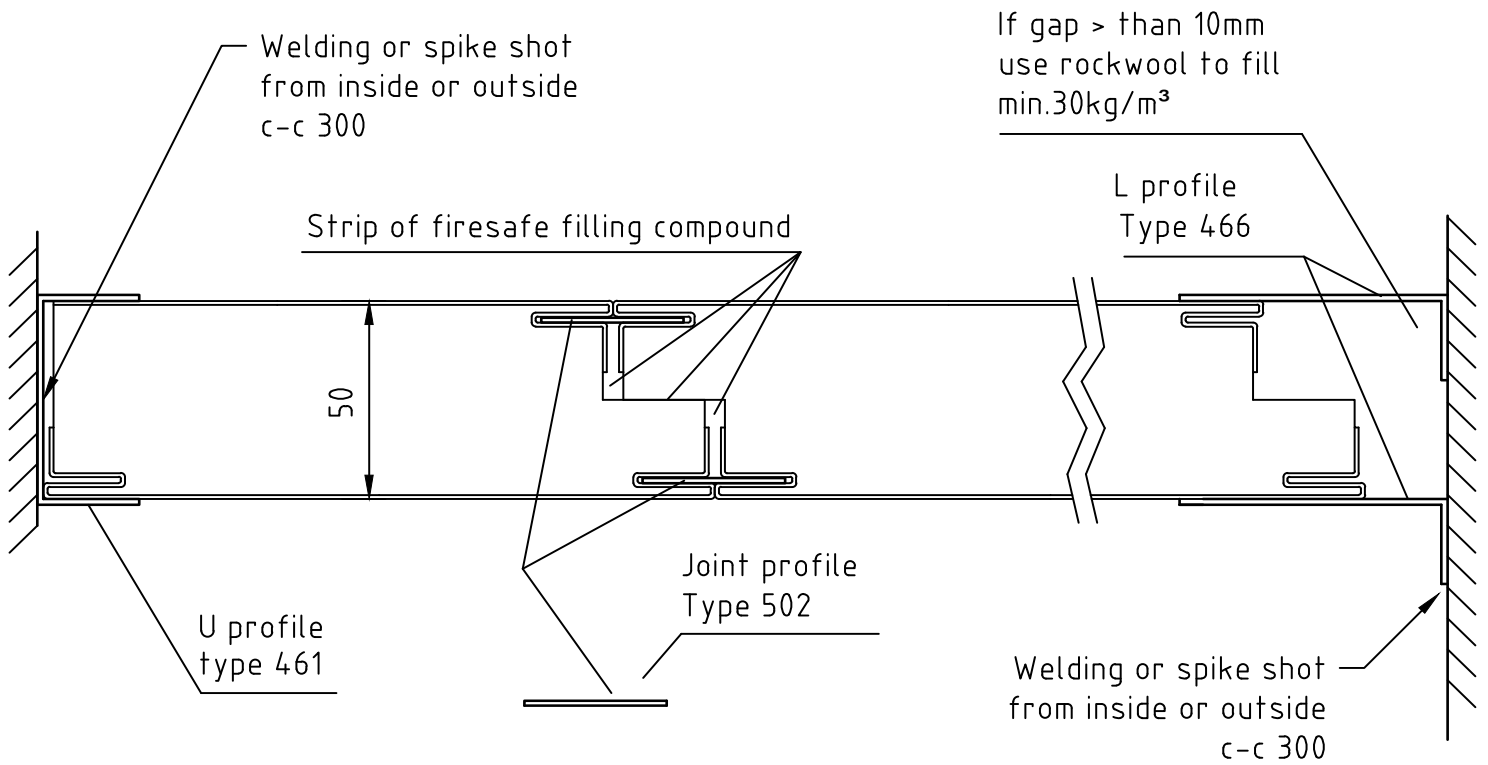
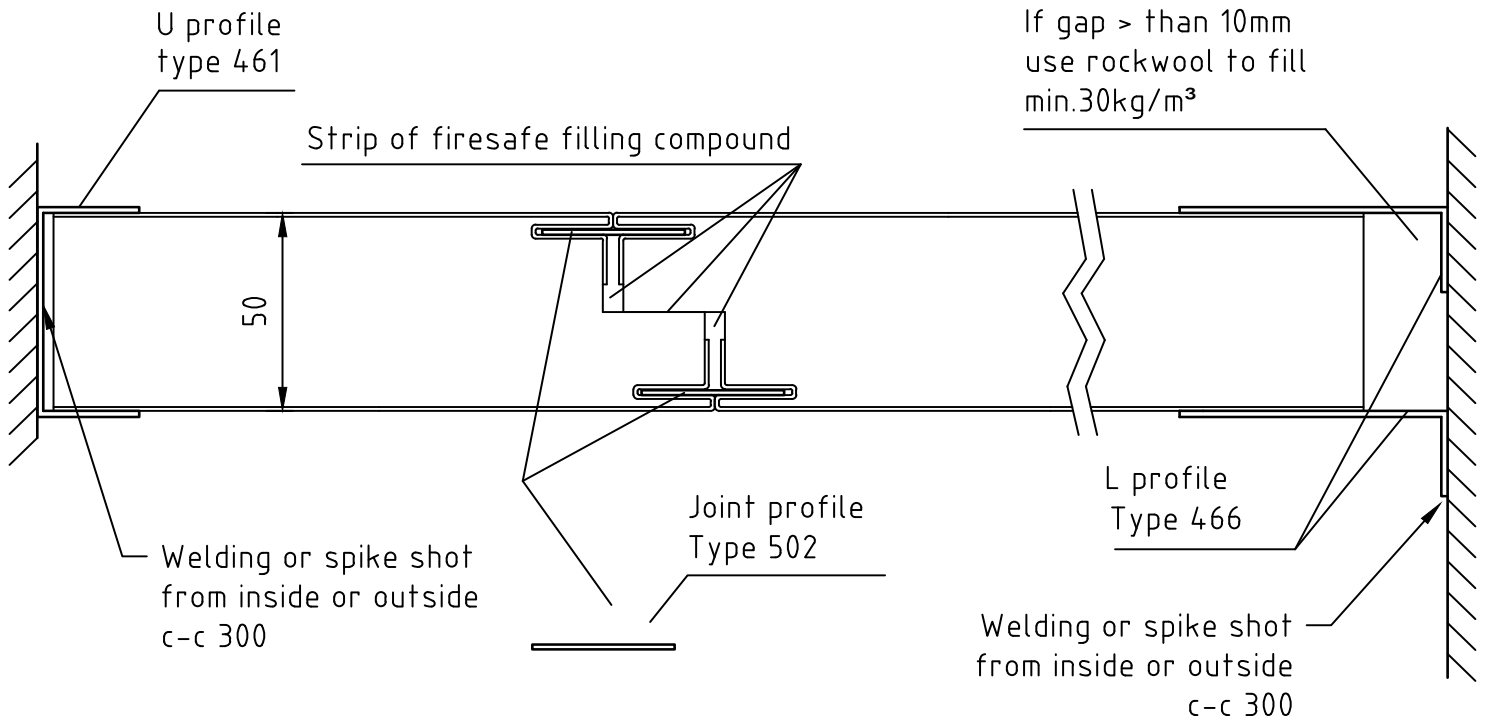
Bottom profile  
type 151  
Galv 1,25 mm

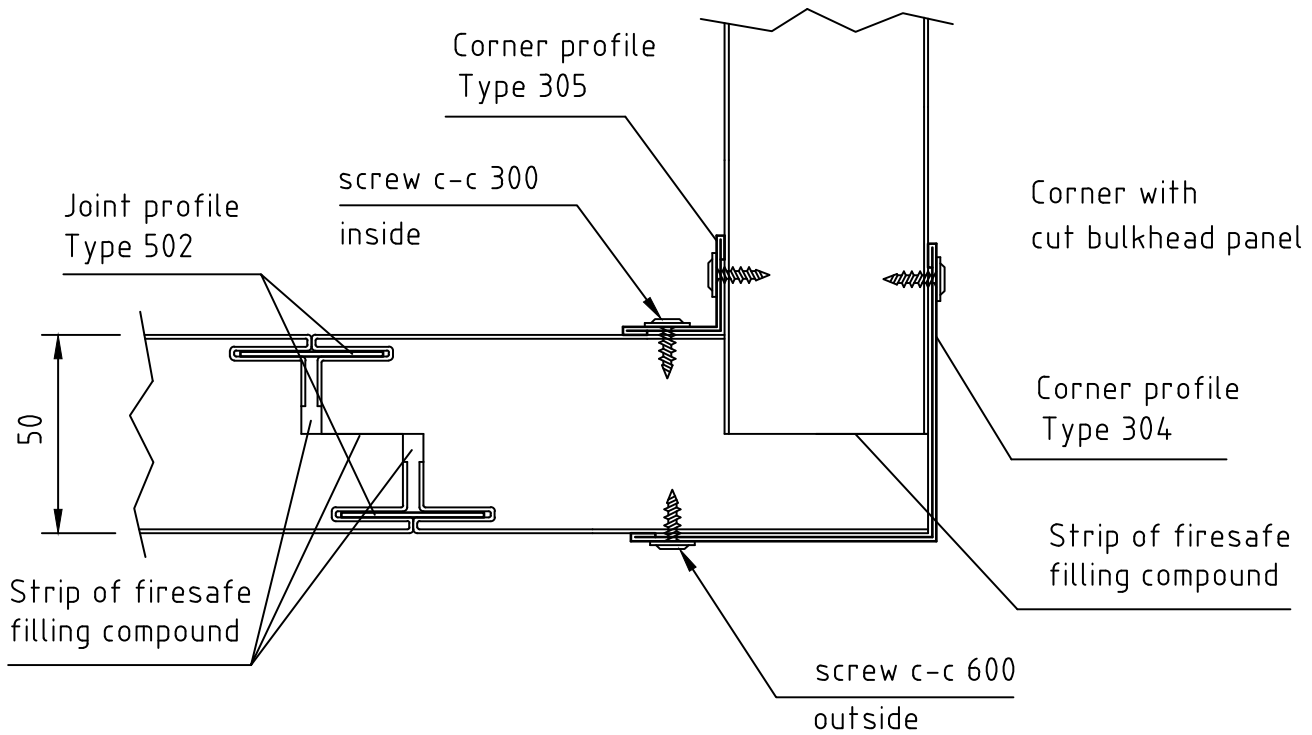
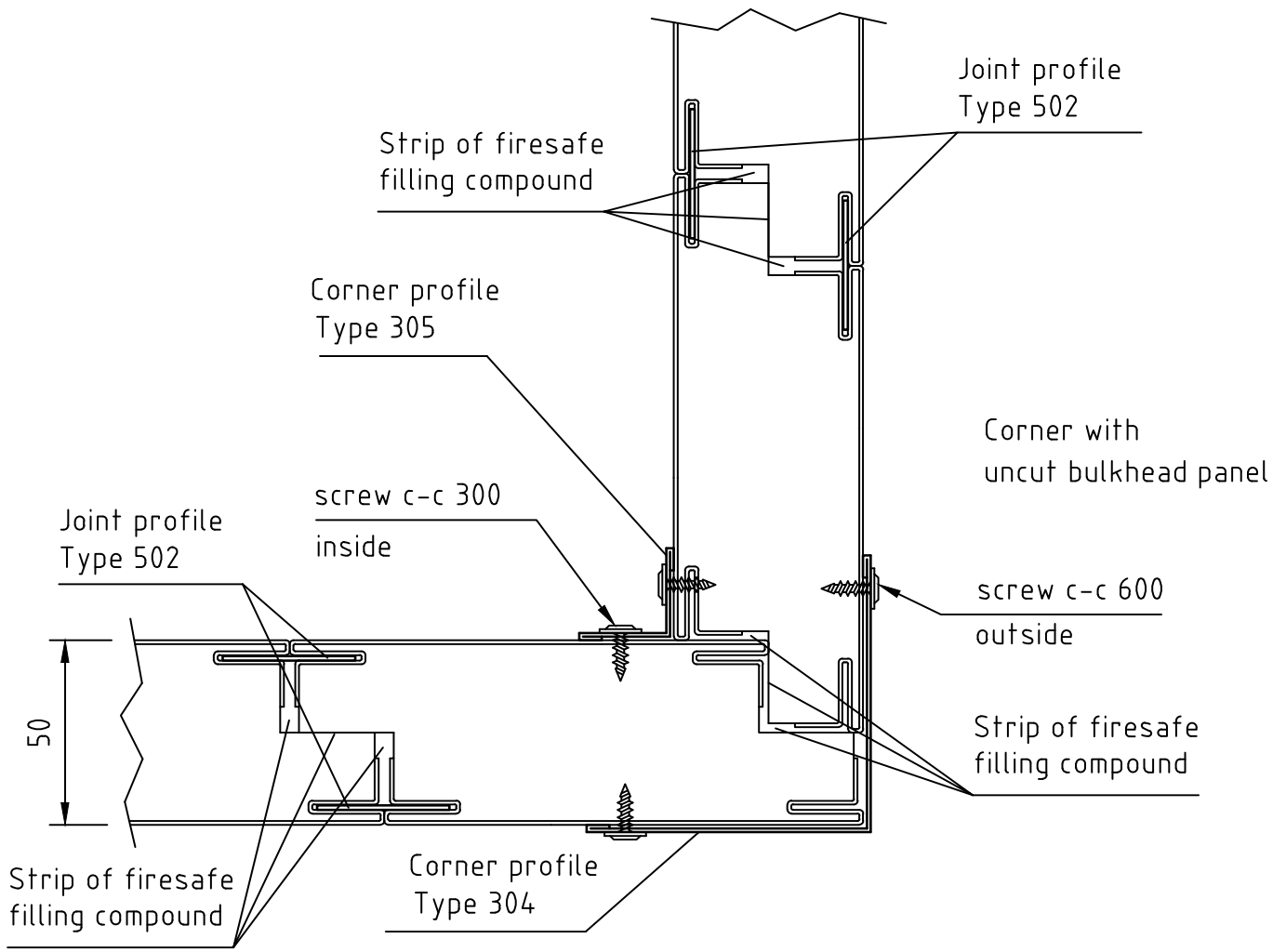


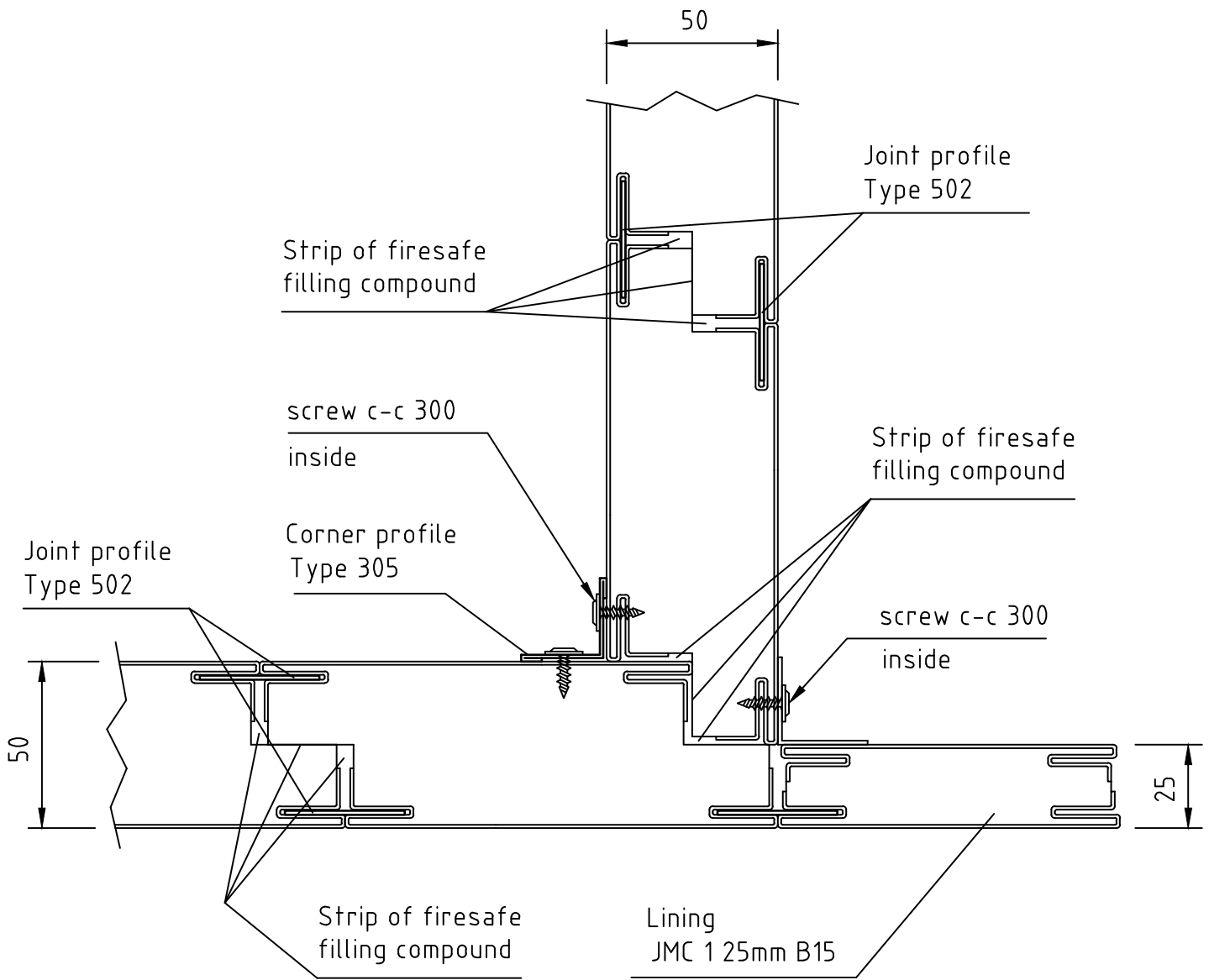
Corner profile  
type 305  
PVC / painted 0,6 mm

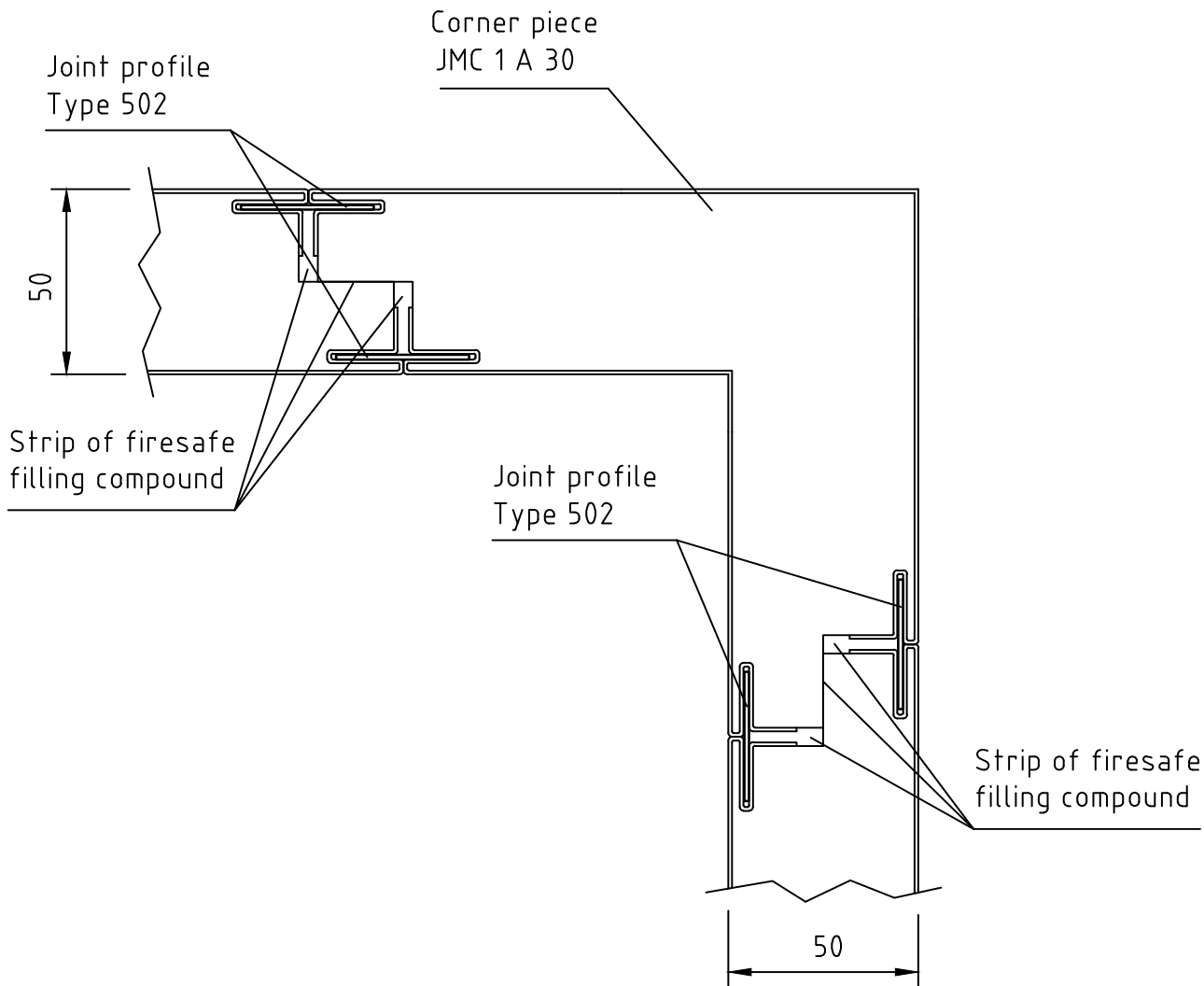
PVC or painted  
thickness 0,6 mm



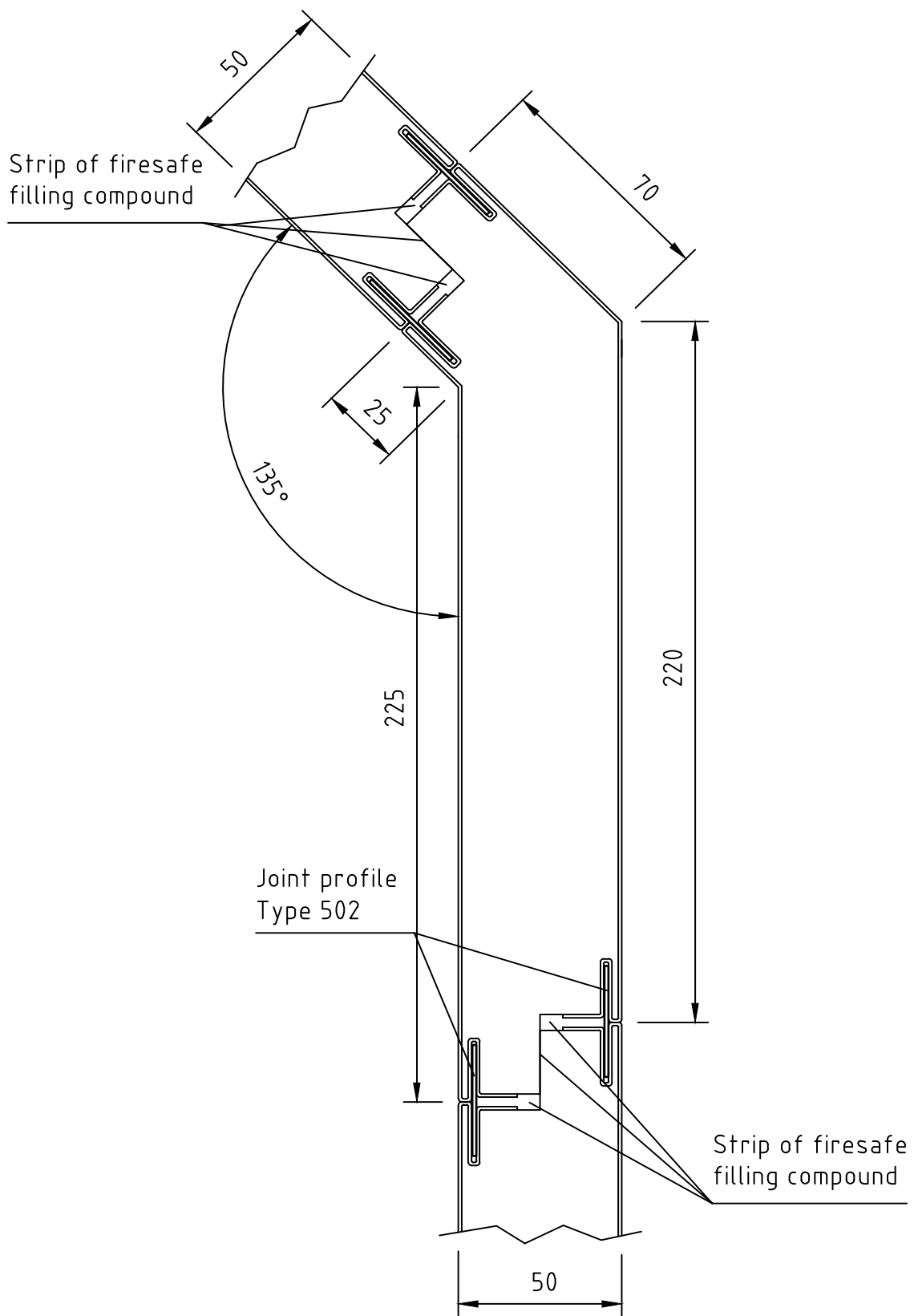


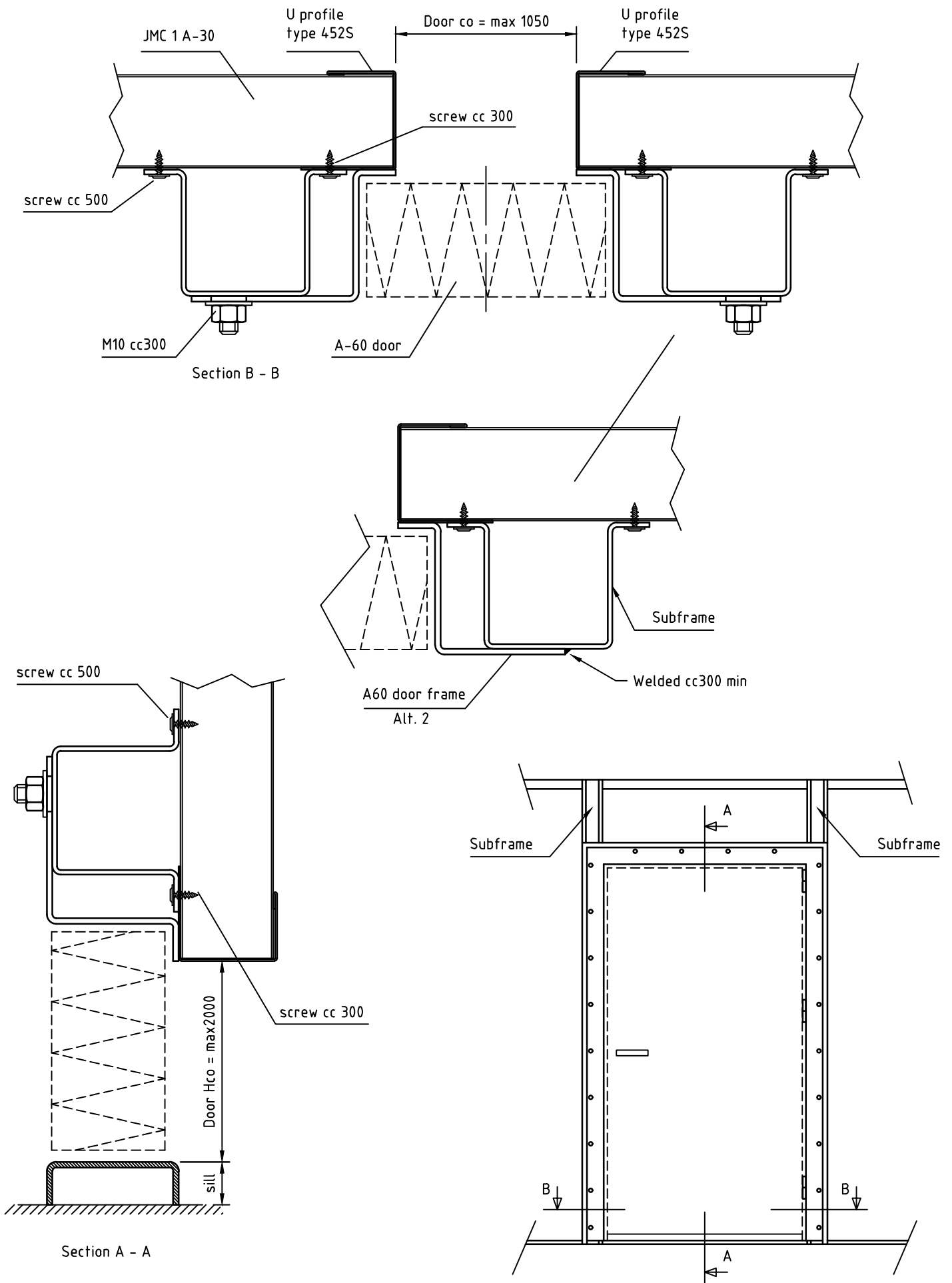


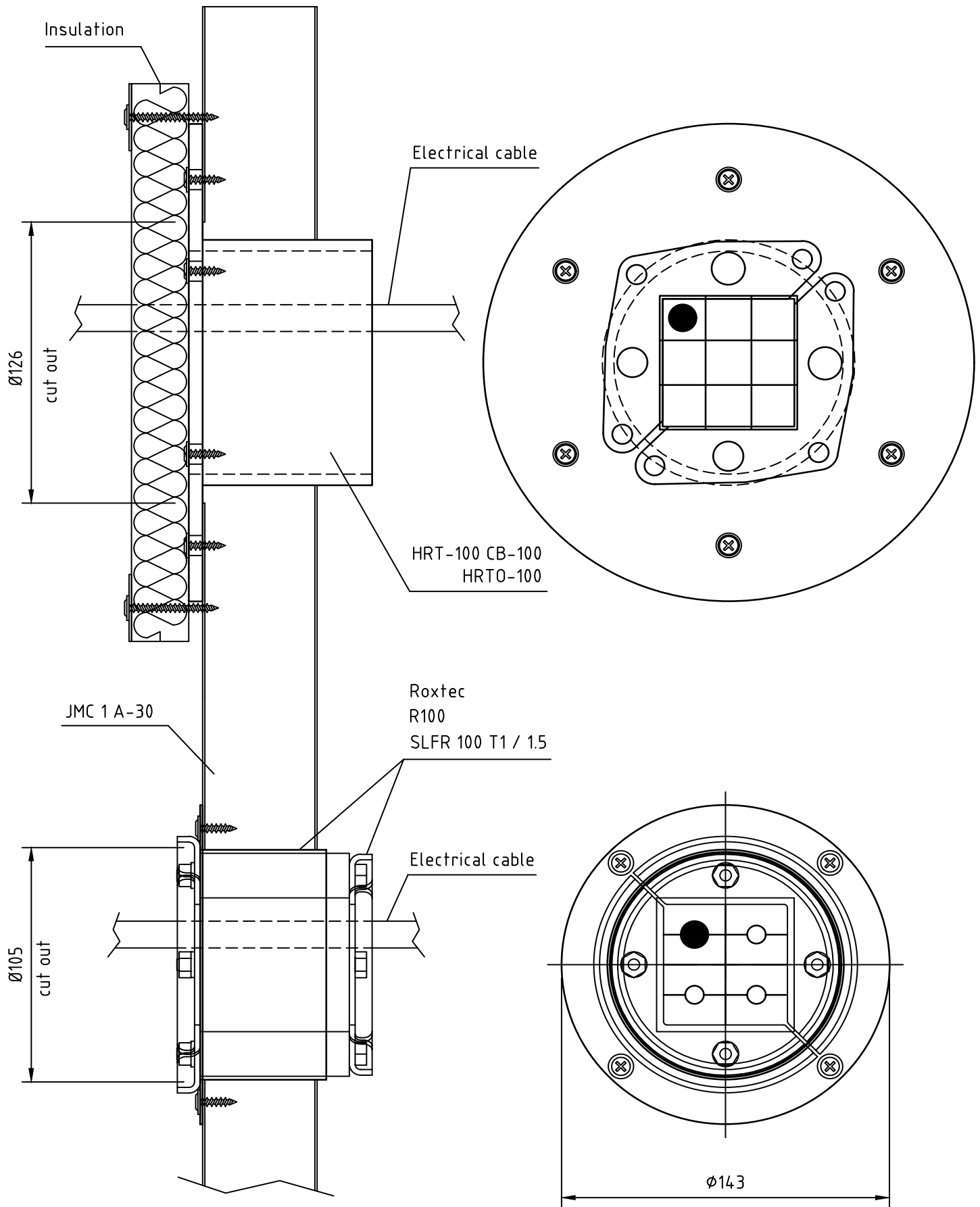


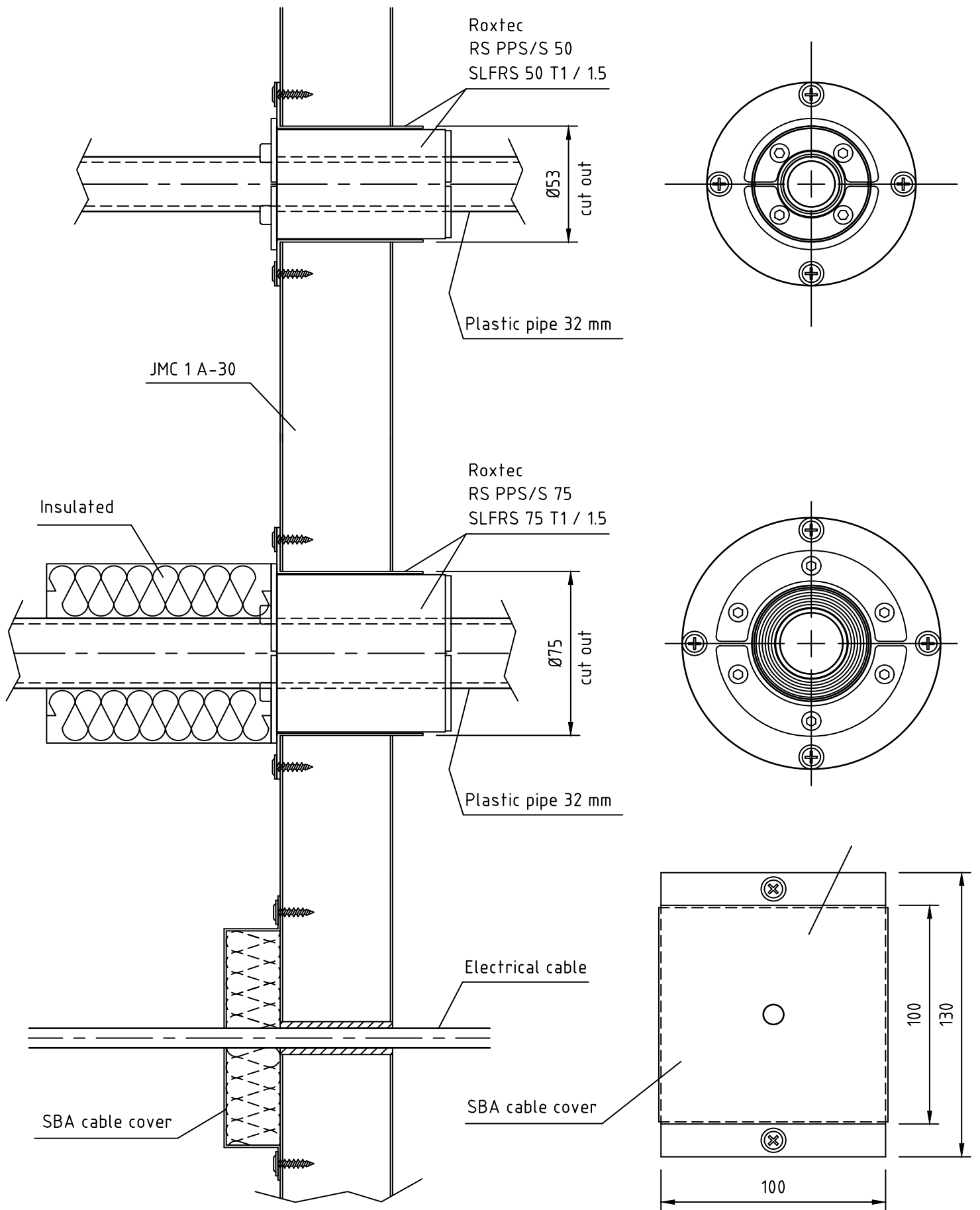


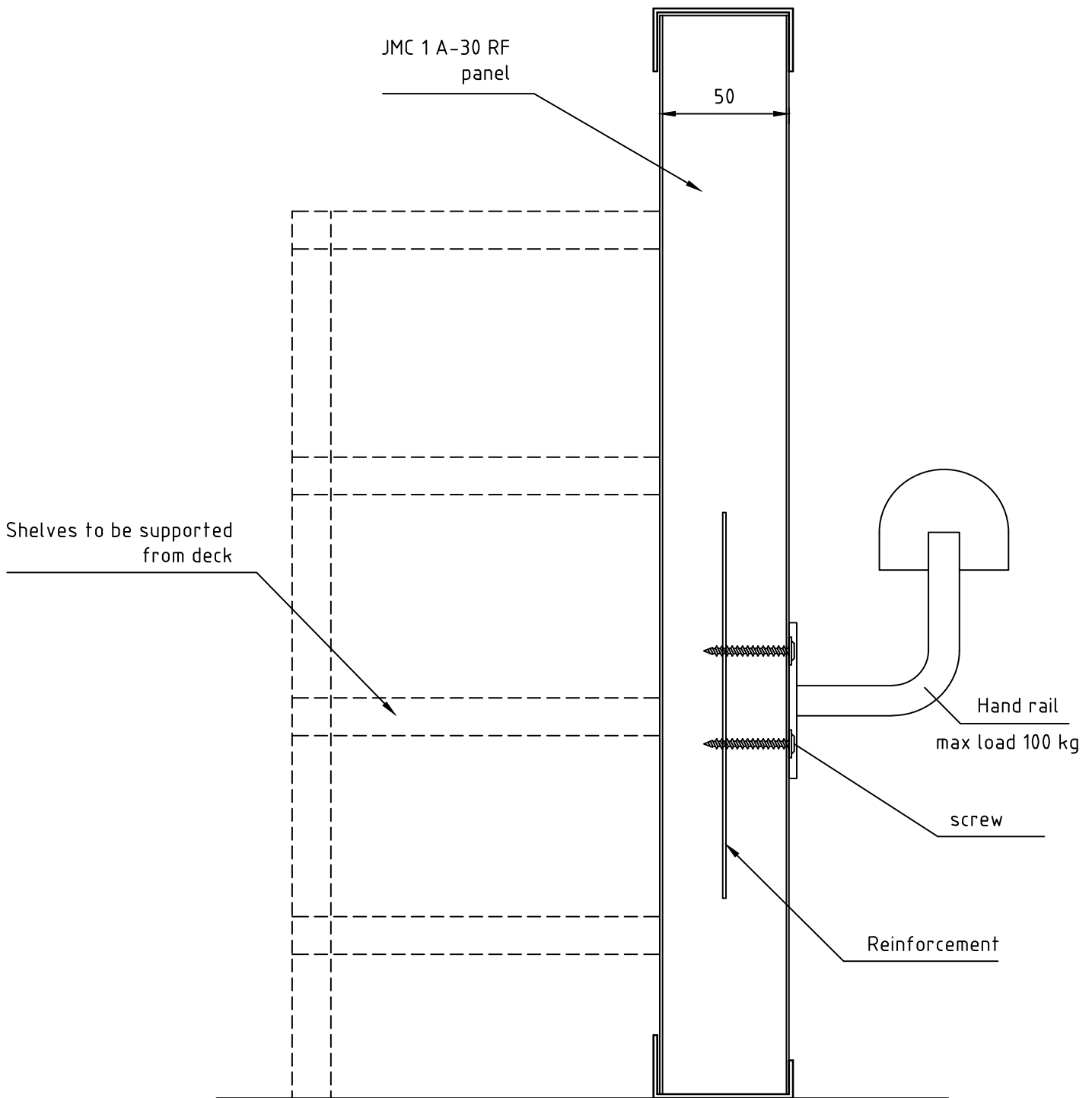








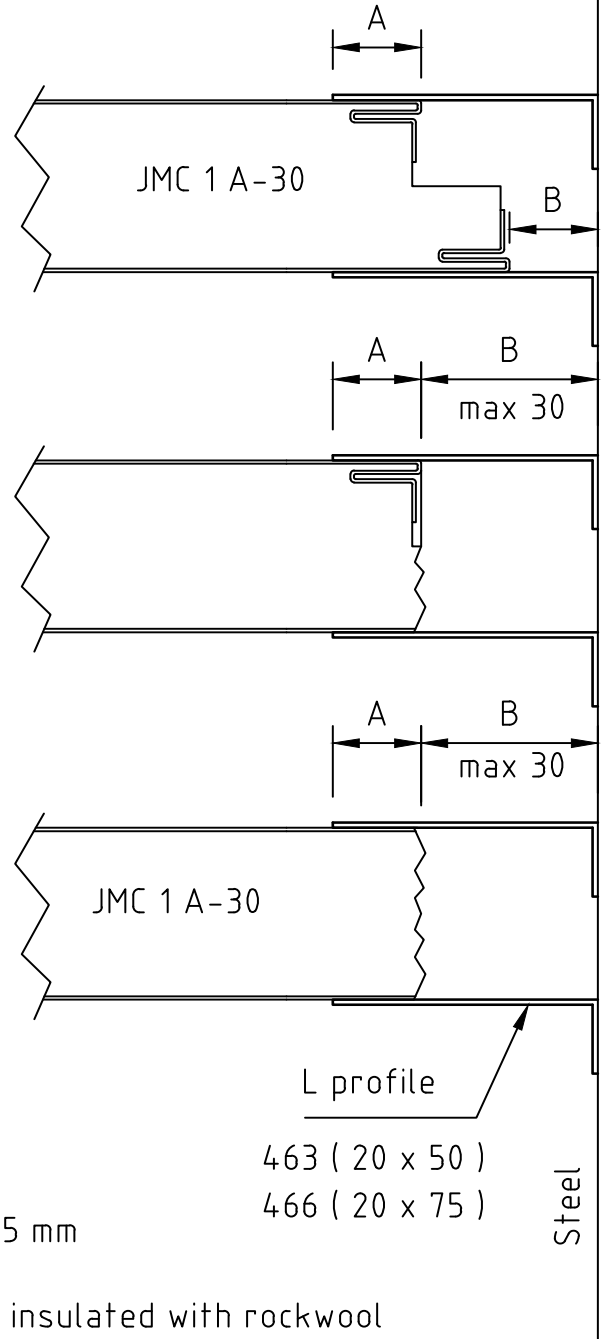
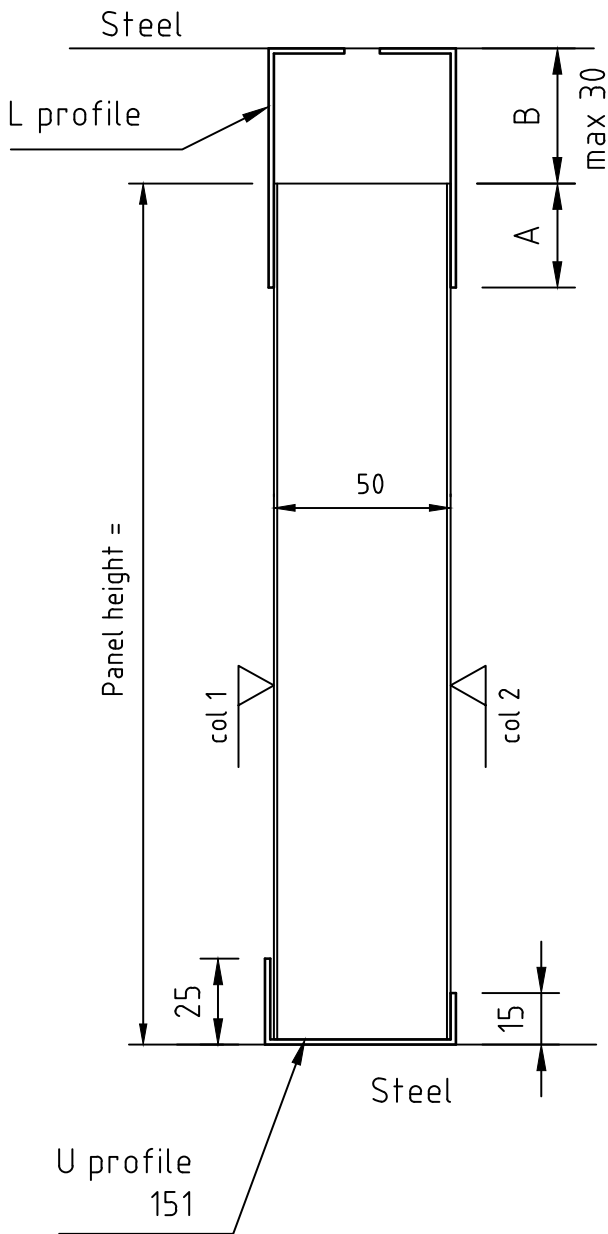
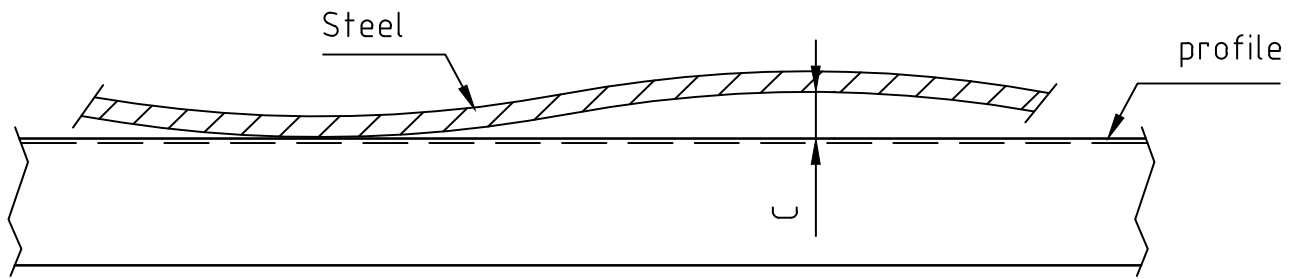




**Regulations II-2/3.3.1 and 3.3.2**

**Application of “light-weight constructions”**

“Light-weight constructions” (honeycomb type, etc.) of steel or equivalent material may be used as non load-bearing internal “A” class divisions in accommodation and service spaces, provided they have successfully passed the relevant standard fire test according to resolution A.754(18)\*. These “light-weight constructions” should not be used as an integral part of main fire zone bulkheads and stairway enclosures on passenger ships.



A Overlapp  
minimum 25 mm

463 ( 20 x 50 )
466 ( 20 x 75 )

B Gap to be insulated with rockwool  
of minimum density 30kg/m<sup>3</sup>  
if B > 10 mm

C Profiles to be welded to follow steel.  
Small gaps to be filled with fire seal,  
if needed before painting